

INDEX

OVERVIEW.....	Pages 1 to 3
50 FLAT TRACK.....	Pages 4 to 5
30 ROUNDTRACK.....	Pages 6 to 9
BOX TRACK.....	Pages 10 to 20
HARDWARE	
DOOR BINDERS, GUIDES AND STAY ROLLERS.....	Pages 21 to 23
HINGES.....	Pages 24 to 28
LATCHES.....	Pages 28 to 29
BOLTS.....	Pages 29 to 30
HANDLES, FUSIBLE LINK.....	Pages 30 to 31
FOLDING DOOR HARDWARE.....	Pages 32 to 34
DOOR SNUGGER.....	Page 35

1. All literature, specifications and conditions dated previous to this issue are hereby withdrawn.
2. Unless otherwise stated all prices quoted to you are in Canadian Funds, F.O.B. Point of shipment and include seller's standard packaging. Prices are for standard products as shown and listed. Deviations from standard are subject to additional charges and add to your account.
3. All seller's goods, except electronic equipment, are guaranteed to be free from defects of material or workmanship for a one year period from date of shipment. Electronic equipment is guaranteed for a 90-day period. Material which, in the opinion of the seller, was defective at the time of manufacture will be replaced without charge, F.O.B. point of shipment, but such defective material may be returned only with the prior consent in writing of the seller. Seller does not accept responsibility for contingent expenses of any kind based on delays, shortages or defects, or for damages resulting from improper wiring or adjustment by others.
4. Buyer shall inspect the goods immediately upon their arrival and shall within ten days of their arrival, give written notice to the seller of any claim that the same do not conform with the terms herein stated. If buyer shall fail to give such notice, the goods shall be deemed to conform to the terms hereof and buyer shall be bound to accept and pay for them in accordance with terms hereof.
5. Any license fee, property, sales, use or excise tax which may be levied, assessed or imposed, by any governmental authority on any of the seller's products subsequent to the date of quotation shall be added to the price therefore and be paid by the buyer. Any increase in the seller's costs in purchasing materials or in manufacturing, processing, selling or delivering its products, resulting from any governmental tax or regulation of industry shall be added to the selling price and be paid by the buyer.
6. Seller shall not be liable for delays or defaults hereunder, due to strikes, riots, fires, accidents, governmental interference, or embargoes, shortage of materials, fuel, labour, supplies or transportation, or due to any cause of a like or different nature beyond its control.
7. Contracts arising out of acceptance of all or any part of our quotation shall, unless otherwise agreed to in writing when the order is accepted, be understood to accept the above conditions, together with the following:
 - (a) Each party agrees to comply with all Federal, Provincial or Municipal laws applicable to its performance hereunder.
 - (b) Any waiver of strict compliance with any one or more of the terms set forth herewith shall not be a waiver of the right to insist upon strict compliance with the terms hereof thereafter.
8. Goods cannot be returned for credit. Written permission must be obtained before goods are returned for credit. Credit will be issued only for properly authorized returns and will be subject to a re-stocking charge. Custom made goods or specially purchased parts cannot be returned for credit.

A continuing product research program is in effect at Richards-Wilcox Canada.
We reserve the right to incorporate product changes at any time without notice.

SIDE MOUNTED BRACKETS

DOOR SIDE ELEVATION

Labels: WALL BRACKET WITH JOINT CLIP, 2 FT CENTERS, 5 FT CENTERS FOR 888 TRACK, WALL BRACKET, WALL BRACKET WITH END BLIND, HANGERS, BINDER, BOW HANDLE, BUMPER SHOE, FLUSH PULL (OPPOSITE SIDE), STAY ROLLER, FINISHED FLOOR, OPENING WIDTH, DOOR WIDTH, EDGE OF DOOR WHEN OPEN, BINDER OR DOOR BUMPER.

STANDARD HANGER MOUNTING

ALTERNATE HEAD SECTION USING TRUCKS

MATERIAL LIST	
*	FT. TRACK
*	WALL BRACKET
*	JOINT BRACKET
2	END BINDERS
1 PR	HANGERS
1	FLUSH PULL
1	BOW HANDLE
2	BUMPER SHOES
2	END STOPS
1	STAY ROLLER

* SUFFICIENT TRACK AND BRACKETS TO MATCH THE OPENING WIDTH.

RICHARDS WILCOX CANADA - MISSISSAUGA SINGLE SLIDING DOOR HARDWARE (05M13) DWG. NO.: ELV_S_SLD

DOOR SIDE ELEVATION

Labels: WALL BRACKET, WALL BRACKET WITH JOINT CLIP, HANGERS, BUMPER SHOE, BOW HANDLE, FLUSH PULL (OPPOSITE SIDE), #671 FLOOR GUIDE, STAY ROLLER, FINISHED FLOOR, OPENING WIDTH, DOOR WIDTH, EDGE OF DOOR WHEN OPEN, BINDER OR DOOR BUMPER, 2 FT CENTERS, 5 FT CENTERS FOR 888 TRACK.

STANDARD HANGER MOUNTING

ALTERNATE HEAD SECTION USING TRUCKS

MATERIAL LIST	
*	FT. TRACK
*	WALL BRACKET
*	JOINT BRACKET
2	END BINDER
2 PR	HANGERS
2	FLUSH PULL
2	BOW HANDLE
4	BUMPER SHOES
2	STAY ROLLER
1	FLOOR GUIDE

* SUFFICIENT TRACK AND BRACKETS TO MATCH THE OPENING WIDTH.

RICHARDS WILCOX CANADA - MISSISSAUGA BI-PARTING SLIDING DOOR HARDWARE (05M13) DWG. NO.: ELV_D_SLD

OVERVIEW

DON'T GUESS . . .

SELECT THE "CAPACITY-FEATURE" WAY

	DOOR WEIGHT IN LBS.									
	125	250	350	400	550	700	2000	1000	4000	4000
TRACK	31	50	31	31	75	33	I BEAM	333	1 BEAM	888
1 WHEEL HANGER		735								
2 WHEEL HANGER	021									
4 WHEEL HANGER			321	323	27B	150B	1029	160B	1029 TON	888A
ROLLER BEARINGS	021	735	321	323						
BALL BEARINGS					27B	150B	1029 1/2 TON	160B	1029 TON	888A
FRAME: FORMED STEEL	021	735	321	323		150B	1029 1/2 TON	160B	1029 TON	
FRAME: FORGED STEEL					27B					888A
APRON: ADJUSTABLE FOR VARYING DOOR THICKNESS		735	321	323	27B	150B	1029 1/2 TON	160B	1029 TON	888A
APRON: HINGE SUSPENSION	021		321							
APRON: PENDANT BOLT FOR VERTICAL ADJUST		735		323	27B	150B	1029 1/2 TON	160B	1029 TON	888A
SWIVEL PENDANT		735								888A
AVAILABLE WITHOUT APRONS		735		323	27B	150B	1029 1/2 TON	160B	1029 TON	888A
HANGERS PER DOOR	2	2	2	2	2	2	2	2	2	2
BRACKET SPACING	2'	1'	2'	2'	2'	2'	-	2'	-	5'
DETAILS ON PAGE	13	21	13	14	14	18	21	19	21	20

HOW TO USE CHART

The vertical columns are headed "DOOR WEIGHT IN LBS." On the left-hand side of the horizontal sections in the chart the various "Hanger Features" are shown.

The numbers shown at an intersecting point of the vertical column and a horizontal section are the catalogue numbers of those hangers available which meet the particular requirement.

Once a hanger has been selected, based on the door weight and the most desirable design feature, further checking in the vertical column for the re-appearance of the same number will quickly reveal the other features this hanger has to offer.

The required track is also listed at the top of the vertical column.

At the very bottom of the vertical columns are the catalogue pages pointing out where to find complete details of the desired hanger.

NOTE: "DOOR WEIGHT IN LBS." is based on the assumption that two hangers are used on each individual door.

Sliding Door Systems for all Agricultural, Commercial and Industrial Door Needs

1/16" Galv. Steel
For doors up to 400 lbs.
6' - 461-0001
8' - 461-0002
10' - 461-0003
12' - 461-0004

31 Track

1/16" Galv. Steel
For doors up to 600 lbs. with needle bearing hangers
6' - 111-0062
8' - 111-0063
10' - 111-0064
12' - 111-0065

30 Track

14 Ga. Galv. Steel
For doors up to 550 lbs.
8' - 461-0013
10' - 461-0014
12' - 461-0012

75 Track

13 Ga. Steel
For doors up to 700 lbs.
6' - 111-0059
8' - 111-0060
10' - 111-0061

33 Track

A "One" track source and destination of reliable supply.

10 Ga. Steel
For doors up to 1,000 lbs.
6' - 111-0360
8' - 111-0361
10' - 111-0362

333 Track

Professional Track Systems
for Your Professional
Quality Buildings

3/16" Steel with 5/8" Cold Rolled Steel Runway
For doors up to 4,000 lbs.
10' - 2-1334

888 Track

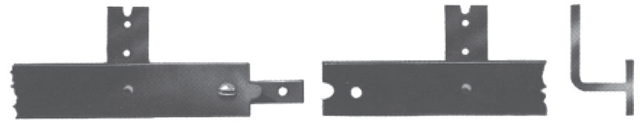
A Full Spectrum of Sliding Door Track for Doors up to 4,000 lbs.



50 FLAT TRACK

2-2894 for 6 ft **2-2896** for 10 ft

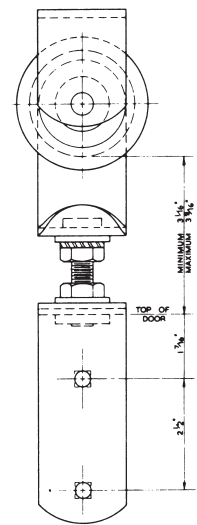
- SIZE: 6', 10'
- RAIL: 1-1/4" x 3/16" hot rolled steel.
- BRACKETS: Formed steel, rivetted to track, one every foot.
- STANDARD LENGTHS: 6 and 10 feet.
- FINISH: Black enamel.
- PACKED: Per piece.
- WEIGHT: 95 lbs. per 100 lineal feet.



50 Flat Track

7-6091

- For Use on No. 50 Flat Track.
- BOXED PAIR: 7-6086
 - SIZE: 735
 - WHEEL: 2-3/8" dia. with 3" dia. double flanges, grey iron.
 - BEARINGS: Cold rolled steel, rollers.
 - APRON: Rigid suspension, laterally adjustable, formed steel 5" long x 2" wide.
 - PENDANT: Steel screw for vertical adjustment.
 - DOOR THICKNESS: 1-3/8" to 1-7/8".
 - FINISH: Black enamel, pendant zinc plated.
 - PACKED: 1 per poly bag
2 carriage bolts 5/16" dia. x 2-1/4" long
1 round head stove bolt 1/4" dia. x 5/8" long
1 joint clip for No. 50 flat track
 - WEIGHT: 3 lbs.
 - CAPACITY: 1 pair for door up to 250 lbs.
 - UPC CODE: 6-27991-76091



735 Hanger

7-6085

- For Use on No. 50 Flat Track.
- SIZE: 735
 - WHEEL: 2-3/8" dia.
 - BEARINGS: Cold rolled steel, rollers.
 - APRON: Formed steel, vertically adjustable, 5 3/4" long x 3 1/2" wide
 - PENDANT: Steel screw for vertical adjustment
 - THICKNESS: 1 3/4" to 2 1/2"
 - FINISH: Decorative Black enamel
 - PACKED: 1 carriage both 5/16" dis. X 2-1/4" long
2 flat head stove bolts 5/16" diameter x 2 1/2" long
 - CAPACITY: 1 pair for door up to 250 lbs.
 - UPC CODE: 6-27991-76085



735 Hanger, 323 Apron

50 FLAT TRACK

2-2890 for 6'

2-2884 for 10'

Black Enamel

1	6' FLAT TRACK
2	735 Hangers
2	Cushioned Door Stops
10	Wood Screws



NOTE: additional hangers required for double doors

Flat Track Kit

2-2897

USE:	Prevents the door from sliding off.
MATERIAL:	Cushioned black enamel. 2-3/8" dia. with 3" dia. double flanges, grey iron.
UPC CODE:	6-27991-22897-0



50 Door Stop

7-6125

USE:	Prevents the door from sliding off.
MATERIAL:	Black enamel. 2-3/8" dia. with 3" dia. double flanges, grey iron.
UPC CODE:	6-27991-76125-5



50 Flat Track Joint Clip

2-2880

2-2881 for 5 PACK

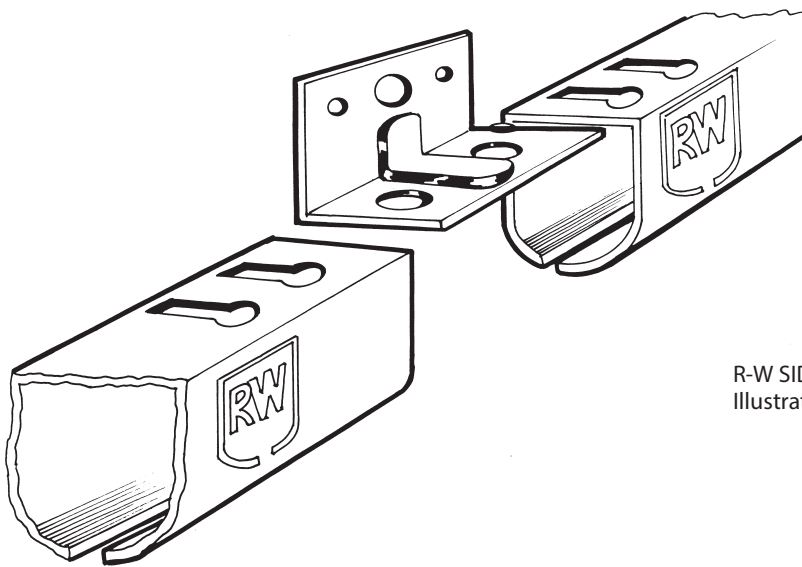
For use with #50 Flat Track

CLEARANCE:	1/2" between doors. Maximum Door Thickness of 2"
MATERIAL:	Formed Steel, 3/16" thick
FINISH:	Black powder coat
USES:	Multi use: agricultural, residential and decorative
UPC CODE:	6-27991-22880-2 6-27991-22881-9

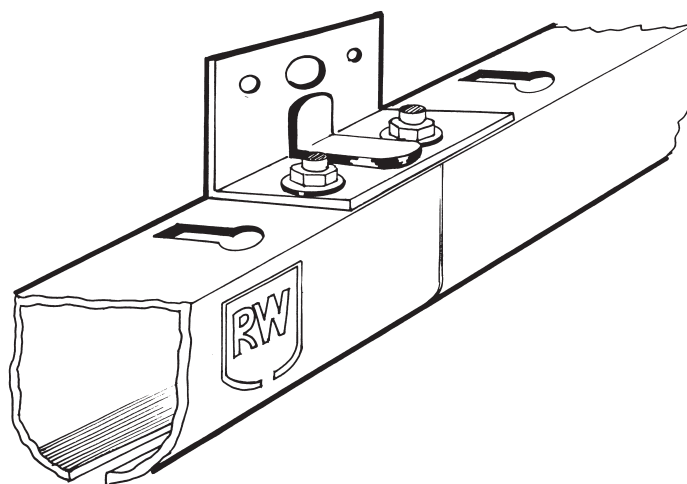


#50 Double Bracket

R-W 30 Round Track, flat top design with unique mounting system. Combines the easy mounting features and stability of box track with the smooth operation of round. The result is a round rail system that is easy to install, easy to operate, self cleaning and long lasting.



R-W SIDE BRACKET
Illustration shows how track ends are prepared.



30 ROUND TRACK

111-0062 6 ft.

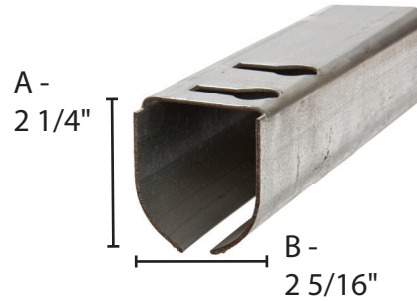
111-0064 10 ft.

111-0063 8 ft.

111-0065 12 ft.

SIZE: 6, 8, 10, 12 ft. lengths
MATERIAL: Formed steel, 14 GA
STANDARD FINISH: Commercially galvanized ASTM-A526,G90
PACKED: 6 ft. and 8 ft. lengths, 8 pcs. in a bundle
10 ft. lengths 6 pcs. in a bundle, and 12 ft. lengths
4 pcs. in a bundle
SHIPPING WEIGHT: 2 lbs. per ft.
UPC CODES: 111-0062 - 6-27991-10062-7
111-0063 - 6-27991-10063-4
111-0064 - 6-27991-10064-1
111-0065 - 6-27991-10065-8

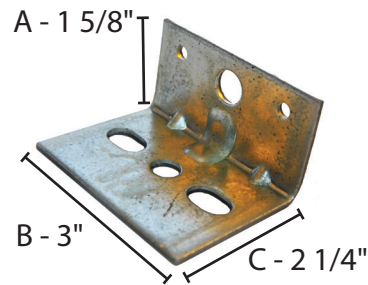
30 Track



114-0305 for use with 30 Round Track

USE: To mount track flush with top of spacer board; also used as joint bracket.
MATERIAL: 11 GA (comm. galvanized G90)
WEIGHT: 1/2 lb.
UPC CODE: 6-27991-40305-6

Side Bracket



114-0306 for use with 30 Round Track

USE: To mount track to a top mount; also used as a joint bracket
MATERIAL: 11 GA (comm. galvanized G90)
WEIGHT: 1/2 lb.
UPC CODE: 6-27991-40306-3

Top Bracket



NEEDLE BEARING WHEEL TROLLEY

7-6015 for use with 30 Round Track

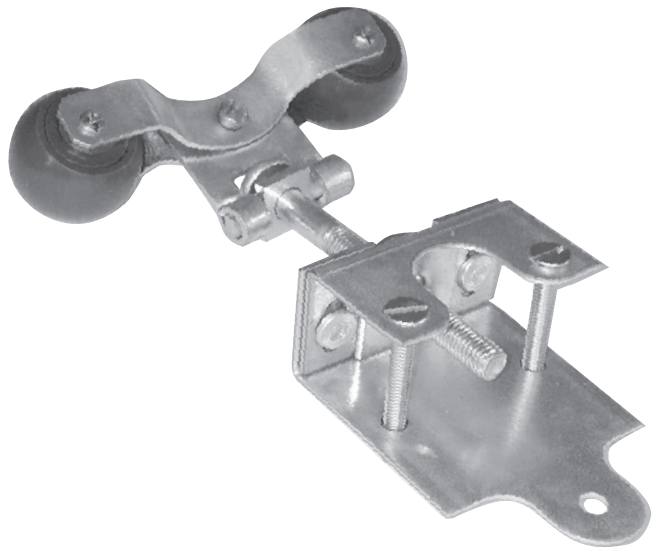
BOXED PAIR:	7-6018
DESCRIPTION:	Round track trolley 9-1/2" pendant
WHEELS:	Nylon
BEARINGS:	Roller bearing
PENDANT:	4 way offset Bolt Trolley hanger, allows doors to be adjusted up or down or moved in or out to eliminate door rub from inside the building.
FINISH:	All exposed parts are made from heavy gauge galvanized or zinc plated steel.
CAPACITY:	1 pair for maximum door weight of 600 lbs.
PACKED:	One in a poly bag.
WEIGHT:	1-3/4 lbs.
UPC CODE:	6-27991-76015-9



Truck & Pendant

7-6016 for use with 30 Round Track

BOXED PAIR:	7-6019
DESCRIPTION:	Round track trolley 90° angle bracket w/ 323 Apron
WHEELS:	Nylon
BEARINGS:	Roller bearing
APRON:	Formed steel, adjustable both vertically and horizontally
PENDANT:	1/2" dia. steel
THICKNESS:	1 3/4" to 2 1/2"
FINISH:	All exposed parts are made from heavy gauge galvanized or zinc plated steel.
CAPACITY:	1 pair for maximum door weight of 600 lbs.
PACKED:	One in a poly bag.
WEIGHT:	2-1/2 lbs.
UPC CODE:	6-27991-76016-6



Hanger

7-6017 for use with 30 Round Track

BOXED PAIR:	7-6020
DESCRIPTION:	Round track trolley 4" straight bolt.
WHEELS:	Nylon
BEARINGS:	Roller bearing
PENDANT:	1/2" dia. steel, zinc plated.
CAPACITY:	1 pair for maximum door weight of 600 lbs.
PACKED:	One in a poly bag.
WEIGHT:	1-1/2 lbs.
UPC CODE:	6-27991-76017-3



Truck & Pendant

30 ROUND TRACK

114-0307 for use with 30 Round Track

USE: Provides a protective and cosmetic finish
MATERIAL: 16 GA (comm. galvanized G90)
WEIGHT: 0.2 lbs.
UPC CODE: 6-27991-40307-0

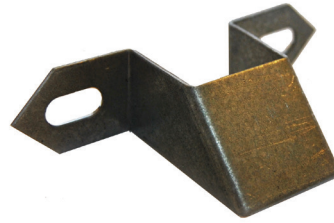
End Cover



114-0308 for use with 30 Round Track

USE: Provides a mounting surface for flashing (track cover)
MATERIAL: 18 GA (comm. galvanized G90)
WEIGHT: 0.12 lbs.
UPC CODE: 6-27991-40308-7

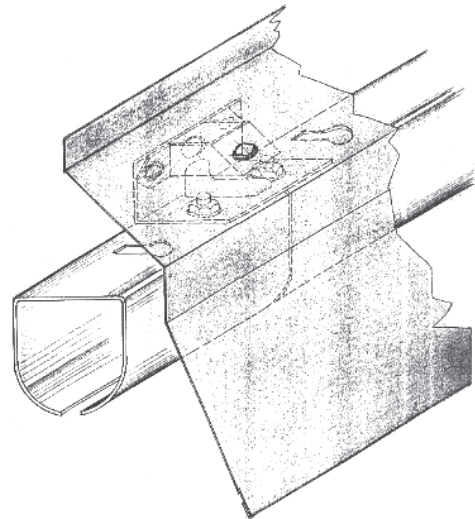
Flashing Clip



114-0309 for use with 30 Round Track

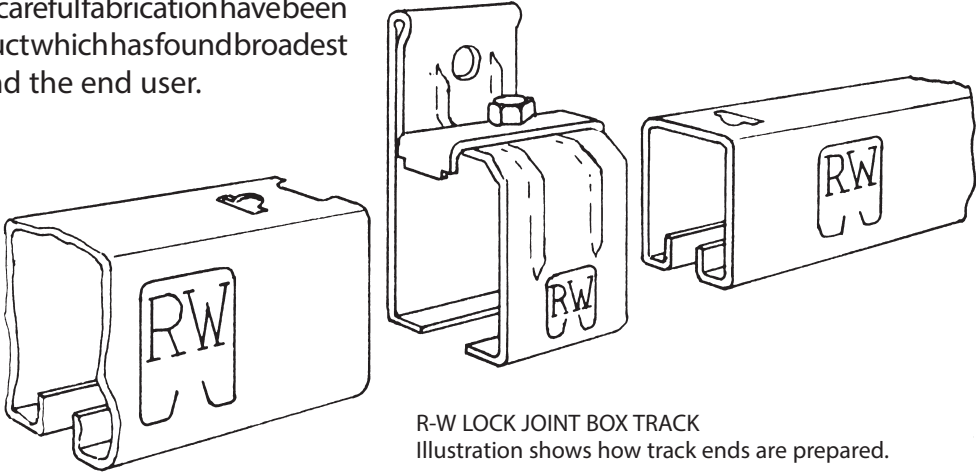
SIZE: 10'
USE: Provides a protective and cosmetic finish.
MATERIAL: Galvanized 26 GA.
PACKED: Bundles of 10
WEIGHT: 6.4 lbs.
UPC CODE: 6-27991-40309-4

Flashing

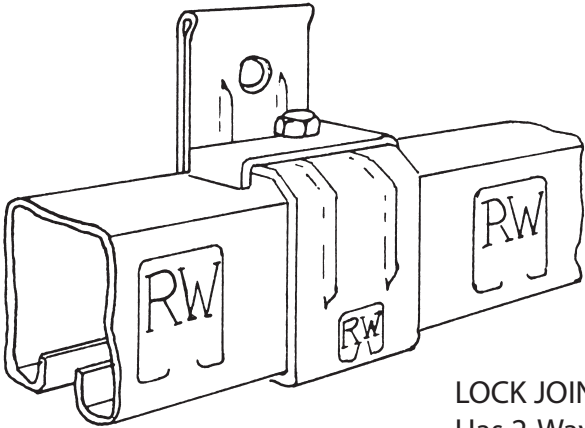


BOX TRACKS

For many years R-W lock joint box track has been the pace-setter for high quality sliding door hardware. Tens of thousands of installations are proof that an excellent design, the right material and careful fabrication have been combined to produce a product which has found broadest acceptance by the trade and the end user.



R-W LOCK JOINT BOX TRACK
Illustration shows how track ends are prepared.



R-W LOCK JOINT BOX TRACK
Completed joint of two lengths of track.

LOCK JOINT BRACKET
Has 2-Way Action

1 Holds tracks together, tightly and permanently, making spreading joints impossible.

2 Holds tracks down, tight against bottom of bracket, making a smooth, continuous runway for the hangers.

The Clip itself is heavy and strong, will not bend or break. Designed for service, not merely a talking point.

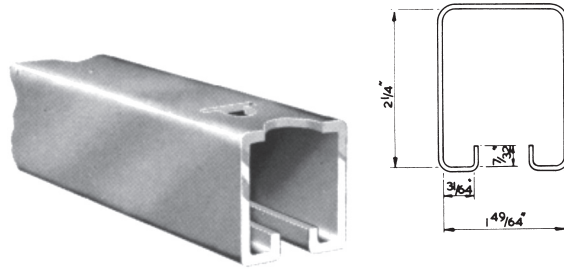
	NO. 30	NO. 31	NO. 75	NO. 33	NO. 333	NO. 888*
GAUGE/THICKNESS:	1/16"	1/16"	14	13	10	3/16"
LENGTH IN FEET:	6, 8, 10, & 12	6, 8, 10 & 12	8, 10 & 12	6, 8 & 10	6, 8 & 10	10
WEIGHT PER FOOT:	2 LBS	1-1/2 LBS.	2 LBS.	3-1/2 LBS.	7 LBS.	11 LBS.
LOCK JOINT CLIP:	NOT AVAILABLE	SOLD SEPARATELY	PACKED WITH HANGER	PACKED WITH HANGER	NOT AVAILABLE	NOT AVAILABLE
FINISH:	GALVANIZED	GALVANIZED	GALVANIZED	BLACK ENAMEL	BLACK ENAMEL	GREY ENAMEL
BRACKET SPACING:	2'0"	2'0"	2'0"	2'0"	2'0"	5'0"

*Runways are 5/8" Dia. cold rolled steel.

BOX TRACKS

461-0001 for 6 ft **461-0003** for 10 ft
461-0002 for 8 ft **461-0004** for 12 ft

SIZE: 6', 8', 10', 12', non-std. lengths
MATERIAL: Formed steel, nominal thickness 1/16"
STANDARD FINISH: Commercially galvanized ASTM - A526, G-90
PACKED: 6 ft. and 8 ft. lengths, 8 pcs. in a bundle
10 ft. lengths, 6 pcs. in a bundle
12 ft. lengths, 4 pcs. in a bundle
SHIPPING WEIGHT: 1 1/2 lbs. per ft.
UPC CODE: 461-0001 - 6-27991-10001-6
461-0002 - 6-27991-10002-3
461-0003 - 6-27991-10003-0
461-0004 - 6-27991-10004-7

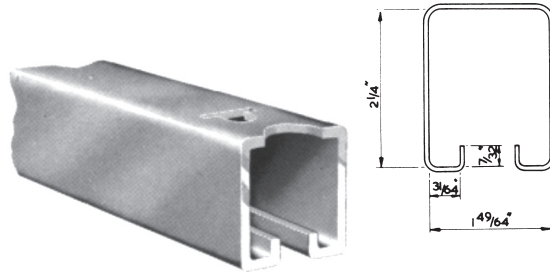


31 Track

NOTE: Track should be supported at 2'-0" centres.

461-0013 for 8 ft **461-0012** for 12 ft
461-0014 for 10 ft

SIZE: 8', 10', 12'
MATERIAL: Formed steel, 14 gauge
STANDARD FINISH: Commercially galvanized ASTM-A526, G-90
PACKED: 8 ft. lengths, 8 pcs. in a bundle
10 ft. lengths, 6 pcs. in a bundle
12 ft. lengths, 4 pcs. in a bundle
SHIPPING WEIGHT: 2 lbs. per ft.

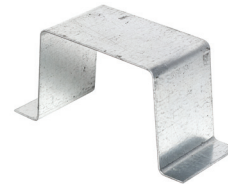


75 Track

NOTE: Track should be supported at 2'-0" centres.

111-1899

USE Provides a protective and cosmetic finish
MATERIAL 16 GA (comm. galvanized G90)
WEIGHT 0.2 lbs
UPC 6-27991-11899-8



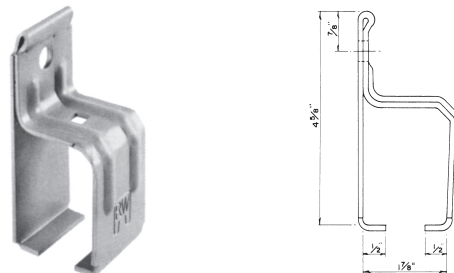
End Cover

NOTE: The type 31 Brackets below and on the following pages are for use with either No. 31 Track or No. 75 Track.

31 & 75 Brackets

7-6135

SIZE: 1 x 31
DESCRIPTION: New style Bracket is the strongest yet. Continuously formed with two full reinforcing ribs.
MATERIAL: 12 GA. formed steel
FINISH: Commercially galvanized ASTM - A526.
PACKED: 50 per carton, complete with 2-1/2" galvanized Lag Bolts.
SHIPPING WEIGHT: 3/4 lbs. each.
UPC CODE: 6-27991-76135-4



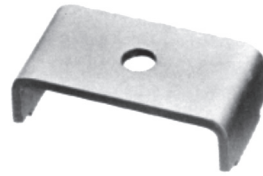
1 x 31 Track Bracket



BOX TRACKS

7-6137

SIZE: 1 x 31
 MATERIAL: Formed steel
 FINISH: Zinc plated
 FASTENERS: Included
 PACKED: 1 pc. per bag, 0.2lbs
 UPC CODE: 6-27991-76137-8



1 x 31 Lock Joint Clip Pkg.

114-0442 82 x 2	114-0439 82 x 5
114-0441 82 x 3	114-0222 82 x 7
114-0440 82 x 4	

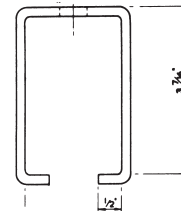
SIZE: 82 x 2, 82 x 3, 82 x 4, 82 x 5, 82 x 7
 MATERIAL: Steel
 FINISH: Black enamel
 PACKED: Bulk
 UPC CODE: 6-27991-40442-8
 SHIPPING WEIGHT: 82 x 2, 2.2 lbs. for thickness of 1-3/4"
 82 x 3, 2.9 lbs. for thickness of 2"
 82 x 4, 3.1 lbs. for thickness of 2-1/4"
 82 x 5, 4.5 lbs. for thickness of 2-1/2"
 82 x 7, 4.7 lbs. for thickness of 3"



82 Binder

114-0328

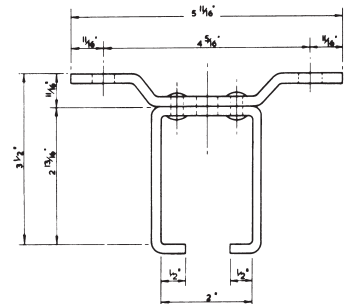
SIZE: 18 x 31
 MATERIAL: Formed steel - 3/16" thick
 FINISH: Black enamel
 SHIPPING WEIGHT: 3/4 lb. each



18 x 31 Track Bracket

1-0009

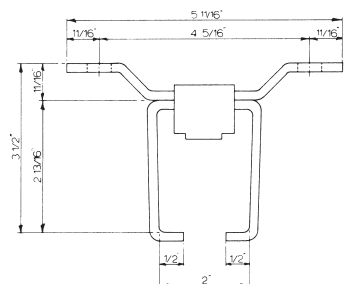
SIZE: 5 x 31
 MATERIAL: Formed steel, 3/16" thick
 FINISH: Black Enamel
 SHIPPING WEIGHT: 1 lb. each



5 x 31 Track Bracket

322-307

SIZE: 5 x 31
 MATERIAL: Formed steel, 3/16" thick
 FINISH: Black Enamel
 SHIPPING WEIGHT: 1-2/3 lbs.



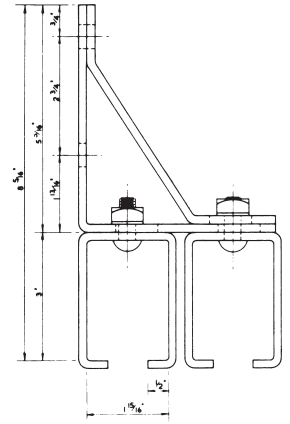
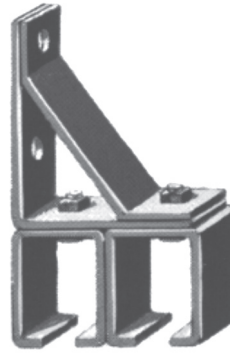
5 x 31 Track Bracket c/w L.J. Clip

BOX TRACKS

1-0316

SIZE: 22 x 31
CLEARANCE: 1/2" between doors. Maximum Door Thickness of 2 inches.
MATERIAL: Formed steel, 3/16" thick.
FINISH: Zinc plated.
SHIPPING WEIGHT: 3-1/2 lbs. each.
UPC CODE: 6-27991-10316-1

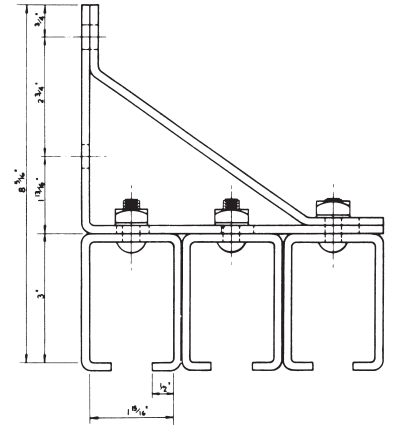
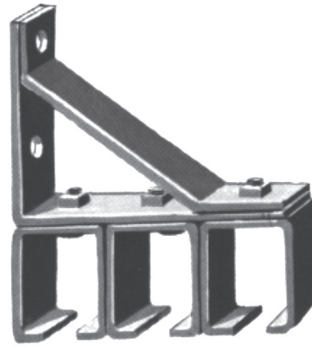
22 x 31 Track Bracket



1-0318

SIZE: 33 x 31
CLEARANCE: 1/2" between doors. Maximum Door Thickness of 2 inches.
MATERIAL: Formed steel, 3/16" thick.
FINISH: Zinc plated.
SHIPPING WEIGHT: 4-1/2 lbs. each.

33 x 31 Track Bracket

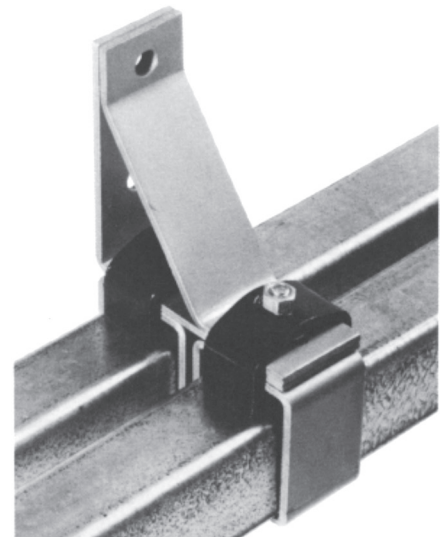


7-6130 for use with No. 31 bracket

SIZE: 22 X 31
MATERIAL: Formed steel.
PACKED: 2 clips per package complete with new lengthened fasteners.
SHIPPING WEIGHT: 13 oz.
INSTALLATION:

1. Remove existing fasteners from 22 x 31 bracket
2. Replace with new lengthened bolts from L.J. Clip Pkg.
3. Place L.J. Clip over bracket so bent ends drop into holes in top of track and then tighten nuts.

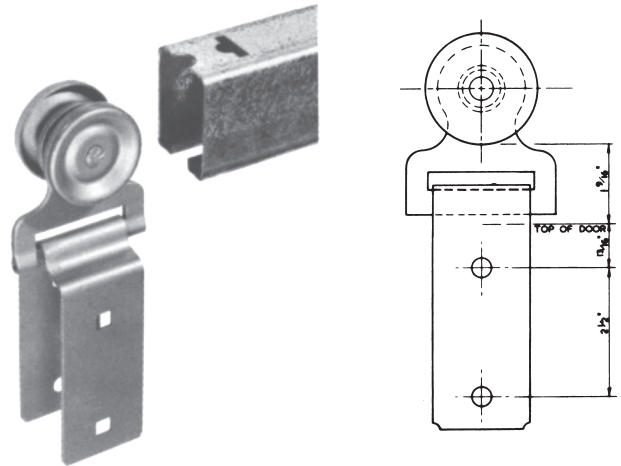
Special 22 x 31 Lock Joint Clip Pkg.





7-6087 for use with No. 31 Track.

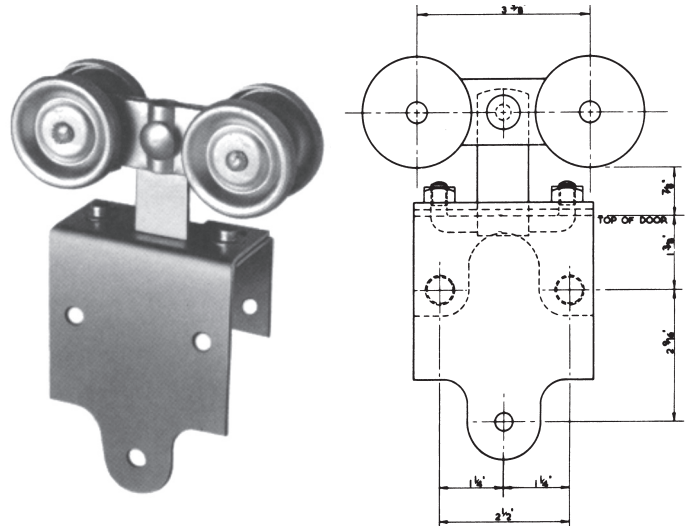
SIZE: 021
WHEELS: 2-1/8" diameter, formed steel.
BEARINGS: Cold rolled steel, rollers.
APRON: Hinge apron, formed steel, 4-3/4" l. x 1-7/8" w.
PENDANT: Formed steel
DOOR THICKNESS: 1-3/4" inches.
FINISH: Wheels satin coat steel, apron and pendant commercial galvanized.
PACKED: One in a polybag.
 20 polybags in a carton.
SHIPPING WEIGHT: 1-1/2 lbs.
CAPACITY: 1 pair for maximum door weight of 125 lbs.
UPC CODE: 6-27991-76087-6



021 Hanger

7-6088 for use with No. 31 Track.

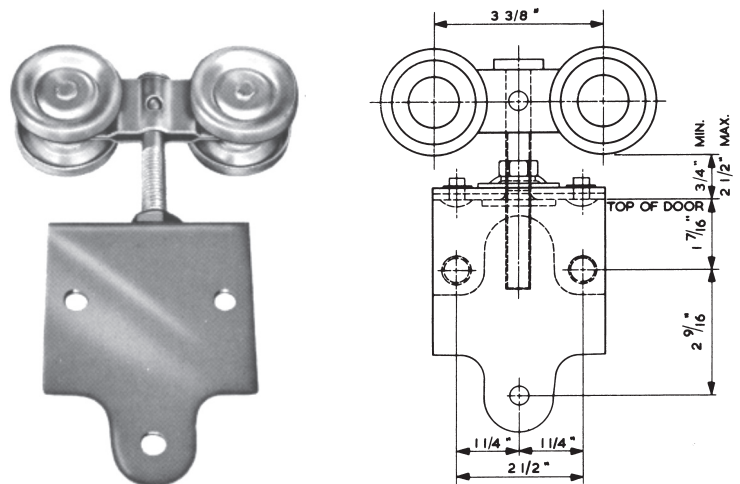
BOXED PAIR: 7-6082
SIZE: 321
WHEELS: 2-1/8" diameter, formed steel.
BEARINGS: Cold rolled steel, rollers.
APRON: Hinge apron, laterally adjustable, 5-3/4" long x 3-1/2" wide
PENDANT: Formed steel with clevis.
DOOR THICKNESS: 1-3/4" inches to 2-1/4".
FINISH: Wheels and frame, satin coat steel, apron and pendant commercially galvanized.
INCLUDED: 1 carriage bolt 5/16" diameter x 2-1/2" long
 2 flat head stove bolts 5/16" diameter x 2-1/2" long
SHIPPING WEIGHT: 2-1/2 LBS.
CAPACITY: 1 pair for maximum door weight of 350 lbs.
UPC CODE: 6-27991-76088-3



321 Hanger

7-6095 for use with No. 31 Track.

BOXED PAIR: 7-6083
SIZE: 323
WHEELS: 2-1/8" diameter, formed steel.
BEARINGS: Cold rolled steel, rollers.
FRAME: Formed steel.
APRON: Formed steel, vertically adjustable, 5-3/4" long x 3-1/2" wide.
PENDANT: 1/2" diameter, steel.
DOOR THICKNESS: 1-3/4" inches to 2-1/2".
FINISH: Wheels and frame, satin coat steel, apron and pendant commercially galvanized; pendant, zinc plated.
INCLUDED: 1 carriage bolt 5/16" diameter x 3" long
 2 flat head stove bolts 5/16" diameter x 3" long
SHIPPING WEIGHT: 2-1/2 lbs.
CAPACITY: 1 pair for maximum door weight of 400 lbs.
UPC CODE: 6-27991-76095-1

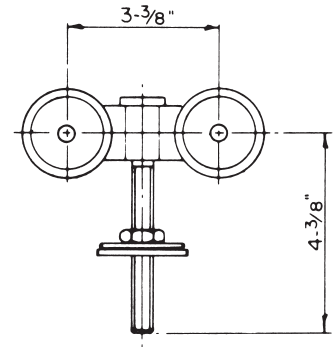


323 Hanger

BOX TRACKS

7-6111 for use with No. 31 Track.

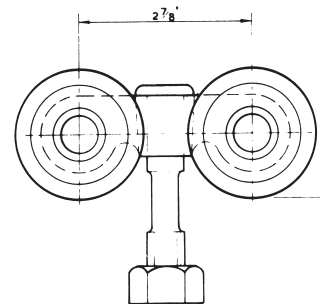
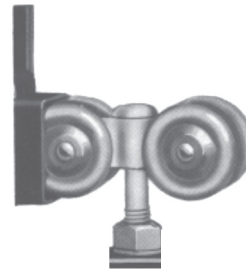
SIZE: 323S
TRUCK: Same as 323 Hanger.
PENDANT: 1/2" diameter, steel, zinc plated.
FASTENERS: 1-5/8" Plan Washer
 1-1/2" Hexnut
 1-1/2" Locating Nut
CAPACITY: 1 pair for maximum door weight of 400 lbs.
SHIPPING WEIGHT: 1-1/2 lbs.
UPC CODE: 6-27991-76111-8



323S Truck & Pendant

7-6113 for use with No. 75 Track.

SIZE: 27B
TRUCK: Same as 27B1 & 27B2 Hanger.
PENDANT: 1/2" diameter x 5", steel, zinc plated.
FASTENERS: (1) Lock Nut
 (1) 1/2" xnut
 (1) 1/2" Lock Washer
CAPACITY: 1 pair for maximum door weight of 550 lbs.
SHIPPING WEIGHT: 1-1/2 lbs.



7-6089 for 27B1

7-6090 for 27B2

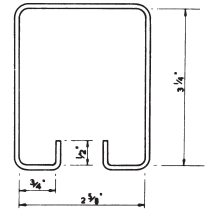
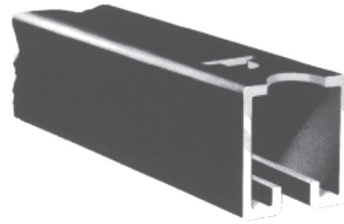
SIZE: 27B1, 27B2 (for use in No. 75 Track)
WHEELS: 2-1/8" diameter, formed steel.
BEARINGS: Hardened ball bearings.
FRAME: Machined forged steel, hardened and zinc plated.
APRON: Laterally adjustable, formed steel 9" l. x 4" w.
PENDANT: 1/2" dia. x 5" long bolt with adjusting nut.
DOOR THICKNESS: 27B1 hanger 1-5/8" to 2"
 27B2 hanger 2" to 2-3/4"
FINISH: Wheels satin coat steel, frame and pendant zinc plated, apron black enamel.
INCLUDED: 8 carriage bolts 5/16" dia. x 2-1/2" long for 27B1
 8 carriage bolts 5/16" dia. x 3-1/2" long for 27B2
 4 flat head stove bolts 5/16" x 2-3/4" long for 27B1
 4 flat head stove bolts 5/16" x 3-1/2" long for 27B2
 1 lock joint clip for No. 31 track
 1 carriage bolt 5/16" diameter x 3/4" long
 2 blinds for track ends.
SHIPPING WEIGHT: 10 lbs. per box of two.
CAPACITY: 1 pair for maximum door weight of 550 lbs.



27B1/27B2 Hanger

111-0059 for 6 ft **111-0061** for 10 ft
111-0060 for 8 ft

SIZE: 6', 8', 10'
 MATERIAL: Formed steel, 13 Gauge.
 FINISH: Black enamel.
 WEIGHT: 3.5 lbs. per ft.

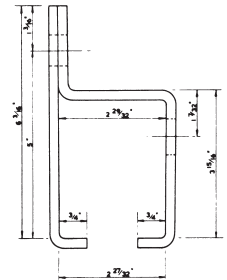


33 Track

NOTE: Track should be supported at 2'-0" centres.

1-0298

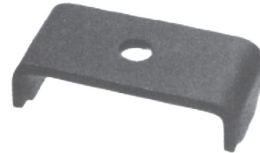
SIZE: 1 x 33
 MATERIAL: Formed steel, 3/16" thick.
 FINISH: Black enamel.
 WEIGHT: 3 lbs. each.



1 x 33 Track Bracket

7-6138

SIZE: 1 x 33
 MATERIAL: Formed steel.
 FINISH: Black enamel.
 FASTENERS: Included.
 PACKED: One "Lock Joint Clip" including fasteners with each pair of hangers.

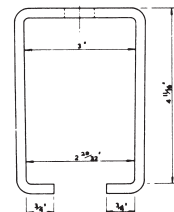


1 x 33 Lock Joint Clip Package

For installation instructions see 1 x 31 L.J. Clip on Page 6

114-0298

SIZE: 18 x 33
 MATERIAL: Formed steel, 3/16" thick.
 FINISH: Black enamel.
 SHIPPING WEIGHT: 4 lbs. each



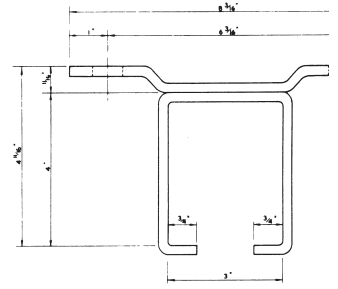
18 x 33 Track Bracket

BOX TRACKS

1-0334

SIZE: 5 x 33
 MATERIAL: Formed steel, 3/16" thick.
 FINISH: Black enamel.
 SHIPPING WEIGHT: 4 lbs.

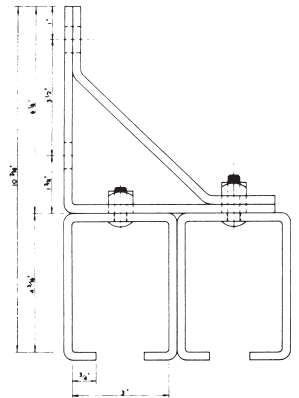
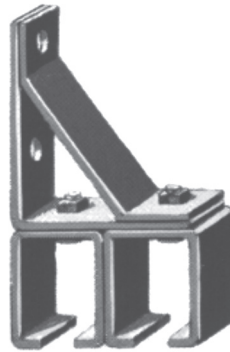
5 x 33 Track Bracket



1-0340

SIZE: 22 x 33
 THICKNESS: Maximum Door Thickness 3"
 CLEARANCE: 1" between doors
 MATERIAL: Formed steel, 3/16" thick.
 FINISH: Black enamel
 SHIPPING WEIGHT: 10 lbs. each.

22 x 33 Track Bracket



7-6131

SIZE: 22 x 33
 PACKED: 2 clips per package complete with new lengthened fasteners
 SHIPPING WEIGHT: 2 lbs.

For use with No. 22 x 33 & 33 x 33 bracket.
 Order 3 pkg for every 2 brackets.

INSTALLATION: See 22 x 31 L.J. Clip Page 20
 1. Remove existing fasteners from 22 x 33 bracket.
 2. Replace with new lengthened bolts from L.J. Clip pkg.
 3. Place L.J. Clip over bracket so bent ends drop into holes in top of track and then tighten nuts.

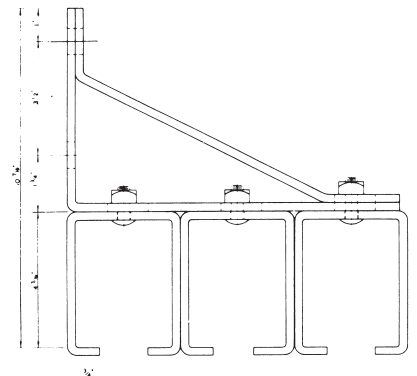
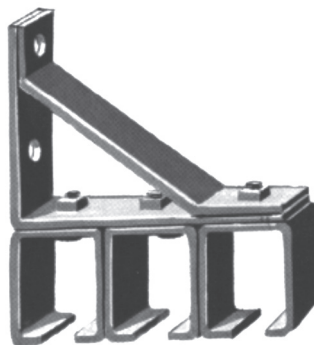


22 x 33 Lock Joint Clip Package

1-0342

SIZE: 33 x 33
 THICKNESS: Maximum Door Thickness 2-3/4"
 CLEARANCE: 1" between doors
 MATERIAL: Formed steel.
 FINISH: Black enamel.
 SHIPPING WEIGHT: 15 lbs. each.

33 x 33 Track Bracket

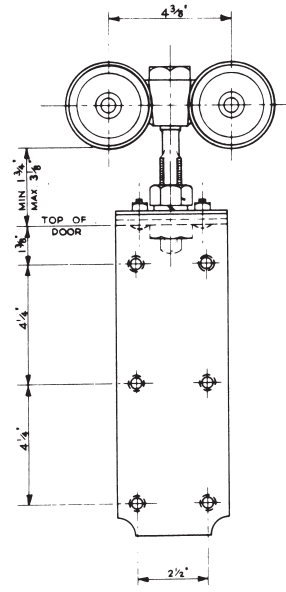
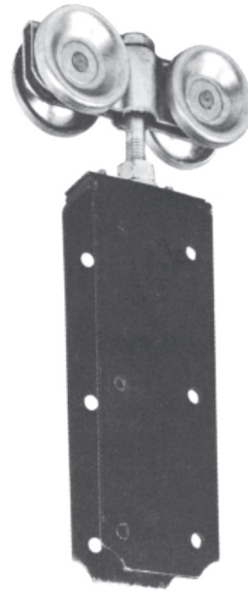


7-6097 for 150B1

7-6098 for 150B2

For use in No. 33 Track.

- SIZE: 150B1, 150B2
- WHEELS: 3" diameter formed steel.
- BEARINGS: Hardened ball bearings.
- FRAME: Formed steel, hardened and zinc plated.
- APRON: Laterally adjustable, formed steel 11-3/4" l. x 4" w.
- PENDANT: 3/4" dia. square head bolt with adjusting nut zinc plated.
- DOOR THICKNESS: 150B1 hanger, 1-3/4" to 2-1/4"
150B2 hanger, 2-1/4" to 3-1/2"
- FINISH: Frame, pendant and wheels zinc plated. Aprons, black enamel.
- PACKED: One PAIR in a box. Included in each box:
12 flat head stove bolts 3/8" dia. x 2-3/4" l. for 150B1
12 flat head stove bolts 3/8" dia. x 4" l. for 150B2
2 carriage bolts 7/16" dia. x 1" long
1 lock joint clip for No. 33 track.
2 blinds for track ends.
- SHIPPING WEIGHT: 20 lbs. per box of two
- CAPACITY: 1 pair for maximum door weight of 700 lbs.



150B1/150B2 Hanger

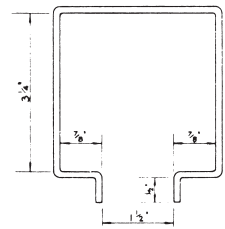
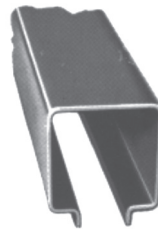
Also available without aprons

111-0360 for 6 ft

111-0362 for 10 ft

111-0361 for 8 ft

- SIZE: 6', 8', 10'
- MATERIAL: Formed steel, 10 gauge.
- FINISH: Black enamel.
- PACKED: Per piece
- WEIGHT: 7 lbs. per ft.

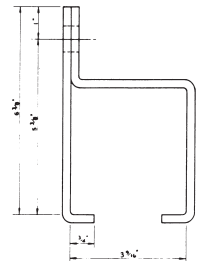
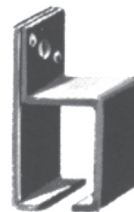


333 Track

1-0296

- SIZE: 1 x 333
- MATERIAL: Formed steel, 1/4" thick.
- FINISH: Black enamel.
- WEIGHT: 5 lbs. each.

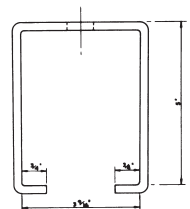
1 x 333 Track Bracket



114-0691

- SIZE: 18 x 333
- MATERIAL: Formed steel, 1/4" thick.
- FINISH: Black enamel.
- WEIGHT: 4-1/2 lbs. each.

18 x 333 Track Bracket

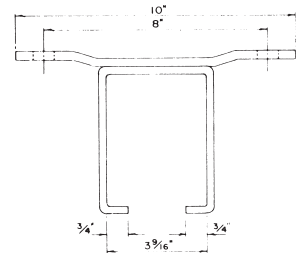


BOX TRACKS

7-6136

SIZE: 5 x 333
 MATERIAL: Formed steel, 1/4" thick.
 FINISH: Black enamel.
 WEIGHT: 6 lbs. each.

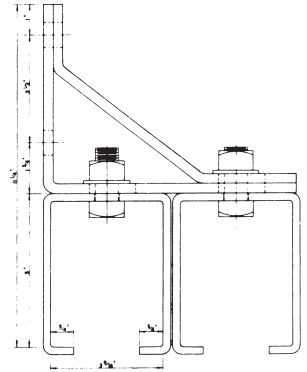
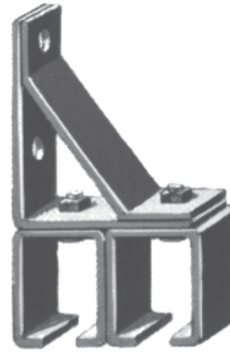
5 x 333 Track Bracket



1-1093

SIZE: 22 x 333
 THICKNESS: Maximum door thickness 3-3/4"
 CLEARANCE: 1" between doors.
 MATERIAL: Brackets Proper, 1/4" formed steel. Angle bracket and brace, 5/16" steel.
 FINISH: Black enamel.
 WEIGHT: 17 lbs. each.

22 x 333 Track Bracket



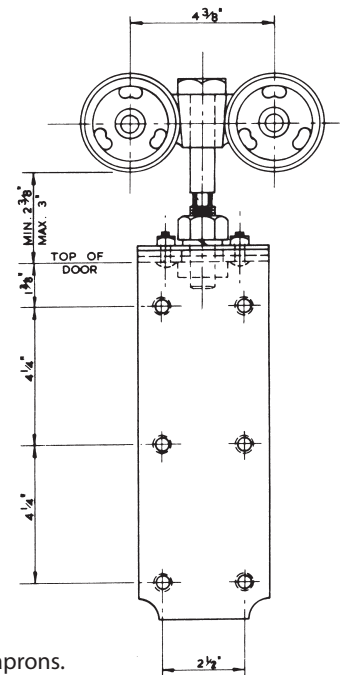
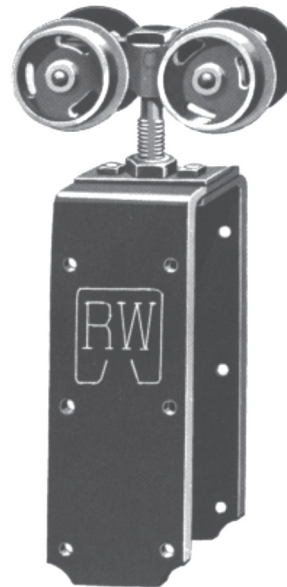
7-6099 for 160B1

7-6100 for 160B2

For use in No. 333 Track.

SIZE: 160B1, 160B2
 WHEELS: 2-7/8" dia. with single flange, 3-3/16" dia., grey iron.
 BEARINGS: Hardened ball bearings.
 FRAME: Formed steel, hardened and zinc plated.
 APRON: Laterally adjustable, formed steel 11-3/8" l. x 4" w.
 PENDANT: 3/4" dia. square head bolt with adjusting nut zinc plated.
 DOOR THICKNESS: 160B1 hanger, 1-3/4" to 2-1/4"
 160B2 hanger, 2-1/4" to 3-1/2"
 FINISH: Frame, pendant zinc plated, wheels and apron black enamel.
 PACKED: One PAIR in a box. Included in each box:
 12 flat head stove bolts 3/8" dia. x 2-3/4" l. for 160B1
 12 flat head stove bolts 3/8" dia. x 4" l. for 160B2
 WEIGHT: 23 lbs. per box of two
 CAPACITY: 1 pair for doors up to 1,000 lbs.

160B1/160B2 Hanger

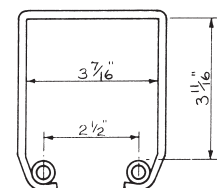
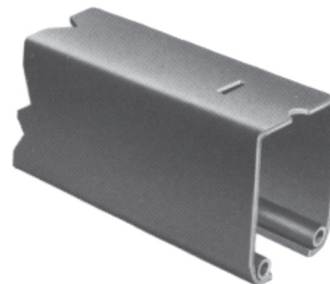


Also available without aprons.

2-1334

SIZE: 10'
 MATERIAL: Formed 3/16" steel plus 2 - 5/8" dia. cold rolled steel runways with ends machined to interlock adjoining track.
 FINISH: Grey paint.
 PACKED: Per piece.
 WEIGHT: 11 lbs. per foot.

888 Track



NOTE: Track must be supported at each joint and at intermediate points not to exceed 5'-0"

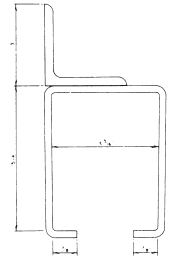
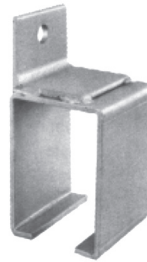


BOX TRACKS

7-6139

SIZE: 1 x 888
 MATERIAL: 1/4" formed steel.
 FINISH: Grey paint.
 SHIPPING WEIGHT: 6 lbs. each

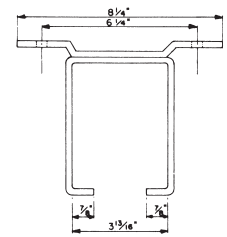
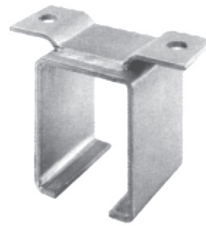
1 x 888 Track Bracket



7-6146

SIZE: 5 x 888
 MATERIAL: 1/4" formed steel.
 FINISH: Grey paint.
 SHIPPING WEIGHT: 6-1/2 lbs. each

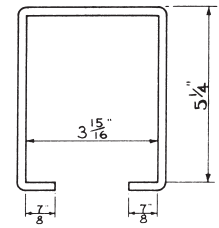
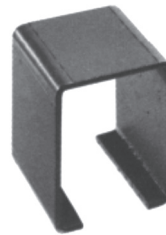
5 x 888 Track Bracket



114-1556

SIZE: 18 x 888
 MATERIAL: 1/4" formed steel.
 FINISH: Grey paint.
 SHIPPING WEIGHT: 5 lbs. each

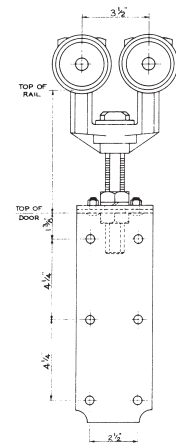
18 x 888 Track Bracket



7-6112

For use in No. 888 Track.

SIZE: 888A
 WHEELS: 2-3/4" tread diameter, machined steel.
 BEARINGS: Double row ball bearings.
 FRAME: Ductile iron casting.
 APRON: Laterally adjustable, formed steel 11-3/8" long x 4" wide.
 PENDANT: 1" dia. high tensile steel with 2 zinc plated adjusting nuts.
 DOOR THICKNESS: 2-1/4" to 3-1/2"
 FINISH: Grey paint.
 PACKED: 1 per box, including 12 flat head stove bolts, 3/8" dia. x 4" long.
 WEIGHT: 18 lbs. each.
 CAPACITY: 1 Pair for doors up to 4000 lbs.



888A Hanger

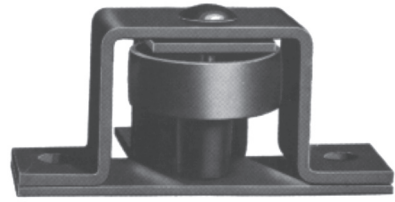
Also available without aprons.

HARDWARE

1-0237

SIZE: 54
No. 54 Steel Barn Door Stay Roller commonly used on all inside sliding doors. Wheel, Nylon, 2-1/2 inches diameter.
FINISH: Zinc plated.
WEIGHT: 2-1/2 lbs. each

54 Stay Roller



1-0241

SIZE: 66
For inside doors only. Can be fastened to concrete floors with expansion bolts. Wheel, grey iron, 2 inches diameter. Steel frame.
FINISH: Black enamel.
WEIGHT: 1/2 lb. each
UPC CODE: 6-27991-10241-6

66 Stay Roller



1-0242

SIZE: 68
No. 68 Adjustable and Reversible Stay Roller for doors up to 3".
WHEEL: Nylon, 2-1/2" diameter.
FRAME: Heavy steel, 2" wide, 6-7/8" high, 1/4" thick
WHEEL HEIGHT: Stay Roller Wheel stands 3-7/16" high.
FINISH: Zinc plated.
PACKED: Bulk.
WEIGHT: 3.25 lbs. each.

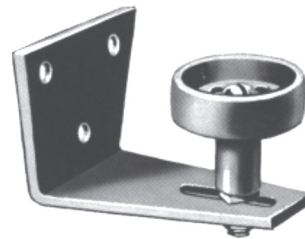
68 Stay Roller



1-0243

SIZE: 153
Reversible and adjustable for doors 1-1/2" to 3" thick.
WHEEL: Nylon, 2-1/2" diameter.
FRAME: Steel.
FINISH: Zinc plated.
PACKED: Bulk.
WEIGHT: 2.1 lbs. each.
UPC: 6-27991-10243-0

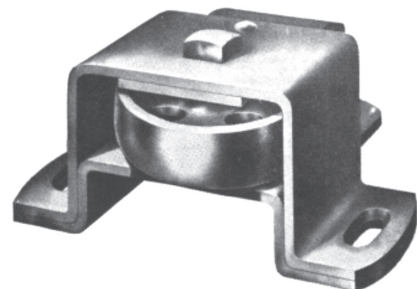
153 Stay Roller



1-0244

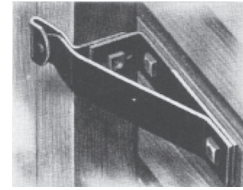
SIZE: 154
No. 154 Heavy Steel Warehouse Stay Roller. Wheel Protected on all sides except door side with heavy steel frame.
WHEEL: Gray iron, 3-1/2" diameter.
FRAME: Steel, has screw holes slotted providing means for adjustment.
FINISH: Black enamel.
WEIGHT: 5 lbs. each.

154 Stay Roller



1-0506

SIZE: 89
 No. 89 Adjustable for doors 1-3/4" to 3" thick. Brace is pivoted, end is flared. May be used at front or back of door. Use 7/16" diameter lag screws or bolts. Finish, black enamel. Packed in bulk. Weight, 1.6 lbs. each.



89 Binder

114-0549

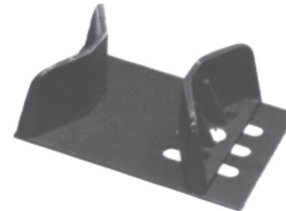
SIZE: 69
 Made of steel and suitable for any size door. Stock, 3/8" x 2-1/2". Length on wall, 6-3/4" Finish, black enamel. Packed in bulk. Weight, 2.1 lbs. each.



69 Bumper

1-0585

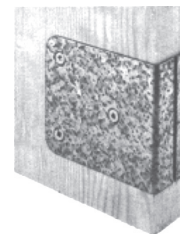
SIZE: 271
 For use with pairs of sliding garage doors. Guides the bottom of doors and holds them in place when closed. Suitable for use with concrete or wood floors. Adjustable for doors 1-3/4" to 3" thick. Weight, 4 pounds. Finish, black enamel.



271 Floor Guide

111-0345

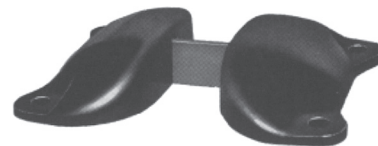
SIZE: 72
 FINISH: Galvanized
 NOTE: Two bumper shoes are used on end of each door.



72 Bumper Shoes

1-0363

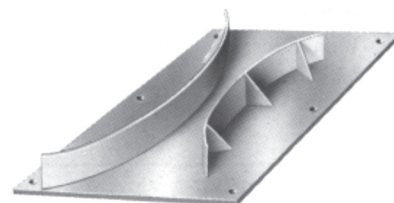
SIZE: 671
 Guides heavy sliding doors and holds them in place. Suitable for either wood or concrete. Made of grey iron, finished in black enamel. 671 Floor Guide (weight 5 pounds).



671 Floor Guide

771

SIZE: 771
 Heavy duty - for electrically operated doors. Custom made to suit size of doors. Give full details including door thickness.

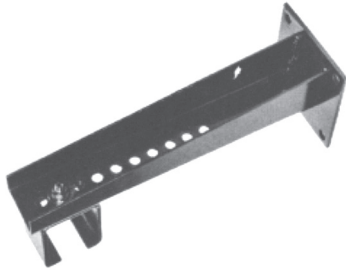


771 Floor Guide

HARDWARE

7-6127 for 435 X 31 End Bracket

7-6129 for 435 X 33 End Bracket



7-6126 for 435 X 31 Intermediate Bracket

7-6128 for 435 X 33 Intermediate Bracket



1-0455 for 435 X 31 Centre Bracket

1-0457 for 435 X 33 Centre Bracket



7-6092 for 435 X 31 Hanger

1-0164 for 435 X 33 Hanger



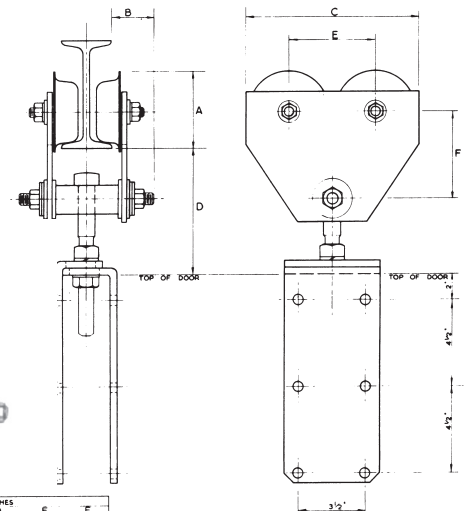
7-2090 for 1/2 ton

7-6024 for 1 ton

The 1029 Hanger is a monorail type trolley fitted with a door apron.

- SIZE: 1/2 Ton, 1 Ton
- WHEEL: Hardened steel (ball bearing).
- FRAME: Mild steel plate.
- APRON: Formed steel.
- PENDANT: 3/4" dia. bolt.
- TRACK: 1/2 ton, 4", 5", 6", 8", 10", 12" I-Beam
1 ton, 5", 6", 8", 10", 12", 15" I-Beam
- DOOR THICKNESS: 1-3/4" to 2-1/4".
- FINISH: Grey paint.
- WEIGHT: 1/2 ton capacity 18 lbs.; 1 ton capacity 33 lbs.
- CAPACITY: 1 pair 1/2 ton for max. door weight of 2,000 lbs.
1 pair 1 ton for max. door weight of 4,000 lbs.
- PACKED: Shipped loose.

1029 Hangers



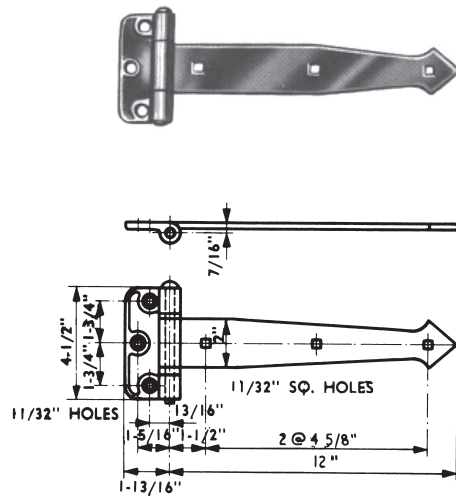
CAPACITY IN TONS	DIMENSIONS IN INCHES					
	A	B	C	D	E	F
1/2	4	2 3/8	9	MAX 7 1/8 MIN 6 5/8	4 1/2	4 3/16
1	5	2 1/2	11 1/2	MAX 10 MIN 9	5 5/8	5 3/8

Also available without aprons

2-3050

SIZE: 12"
PINTLE: Steel.
STRAP: Formed steel, 1/4" thick x 2" wide.
PIN: 3/8" dia. steel, loose pin.
FINISH: Pintle and strap, black enamel.
PACKED: Strapped in bundles as required. Fasteners not included.
SHIPPING WEIGHT: 3 lbs. each.

03 x 0 Hinge

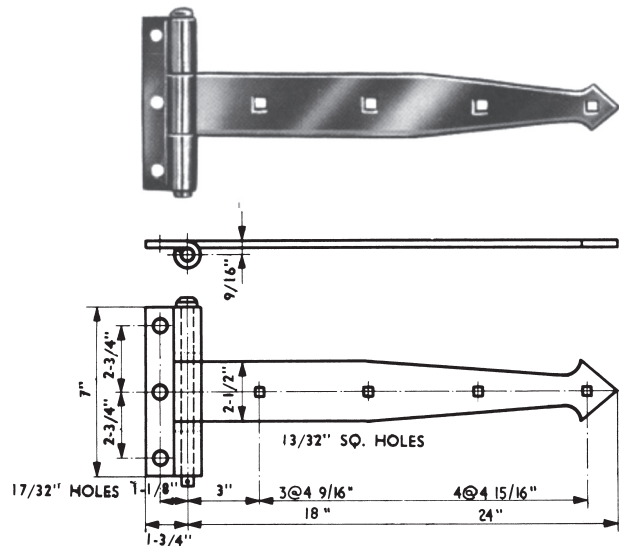


1-0414 for 18"

1-0413 for 24"

SIZE: 18", 24"
PINTLE: Formed steel, 5/16" thick.
STRAP: Formed steel, 5/16" thick x 2-1/2" wide.
PIN: 1/2" dia. steel, zinc plated. Loose pin with cotter pin.
FINISH: Pintle and strap, black enamel.
PACKED: Strapped in bundles as required. Fasteners not included.
SHIPPING WEIGHT: 18" - 7 lbs. each
 24" - 8-1/2 lbs. each

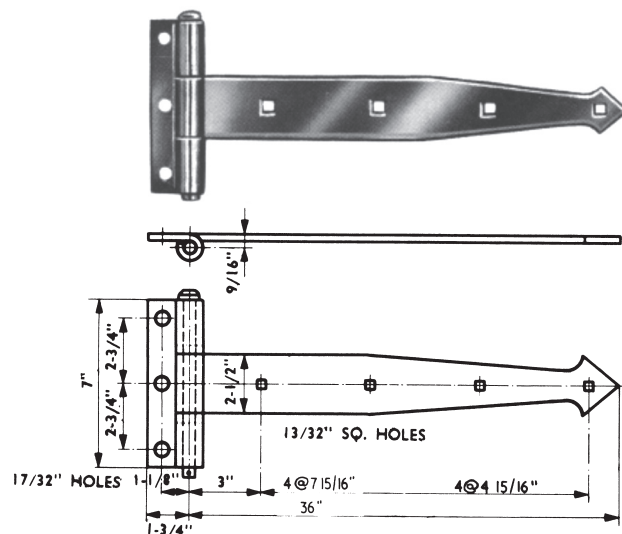
03 x 3S Hinge



1-0405

SIZE: 36"
PINTLE: Formed steel, 5/16" thick.
STRAP: Formed steel, 5/16" thick x 2-1/2" wide.
PIN: 1/2" dia. steel, zinc plated.
BEARINGS: 2 precision ball bearings.
FINISH: Pintle and strap, black enamel.
PACKED: Strapped in bundles as required. Fasteners not included.
SHIPPING WEIGHT: 11-1/2 lbs. each

03 x 3S - BB Hinge

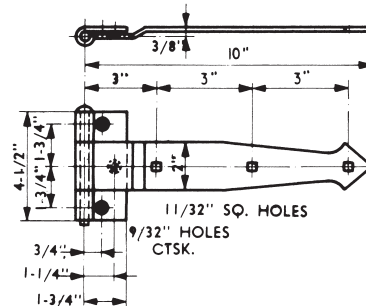


HARDWARE

1-0491

SIZE: 10"
PINTLE: Formed steel.
STRAP: Formed steel, 3/16" thick x 2" wide.
PIN: 3/8" dia. steel loose pin.
FINISH: Zinc plated.
PACKED: Strapped in bundles as required. Fasteners not included.
SHIPPING WEIGHT: 2 lbs. each.

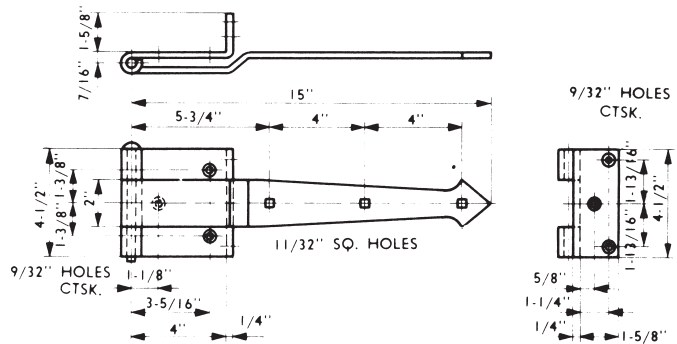
734 Hinge



2-2917

SIZE: 15"
PINTLE: Formed steel, 1/4" thick.
STRAP: Formed steel, 1/4" thick x 2" wide.
PIN: 3/8" dia. steel loose pin.
FINISH: Pintle and strap, black enamel.
PACKED: Strapped in bundles as required. Fasteners not included.
SHIPPING WEIGHT: 5 lbs. each.

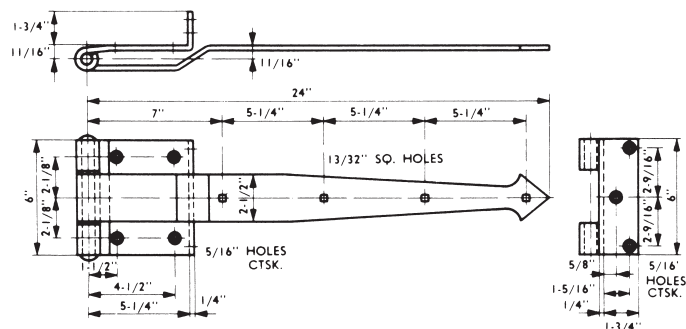
03 x 5 Hinge



1-0203

SIZE: 24"
PINTLE: Formed steel, 1/4" thick.
STRAP: Formed steel, 1/4" thick x 2-1/2" wide.
PIN: 5/8" dia. cold rolled steel, tight pin.
BEARINGS: 2 hardened steel disc bearings.
FINISH: Pintle and strap, black enamel.
PACKED: Strapped in bundles as required. Fasteners not included.
SHIPPING WEIGHT: 10 lbs. each.

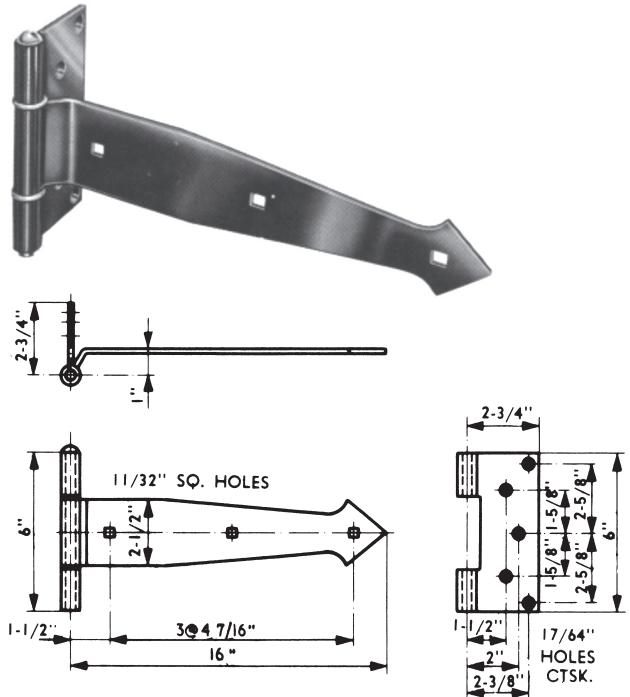
03 x 10 Hinge



1-0187

SIZE: 16"
PINTLE: Formed steel, 3/16" thick.
STRAP: Formed steel, 3/16" thick x 2-1/2" wide.
PIN: 3/8" dia. steel loose pin.
BEARINGS: 2 hardened steel disc bearings.
FINISH: Pintle and strap, black enamel.
PACKED: Strapped in bundles as required. Fasteners not included.
SHIPPING WEIGHT: 4-1/2 lbs. each.

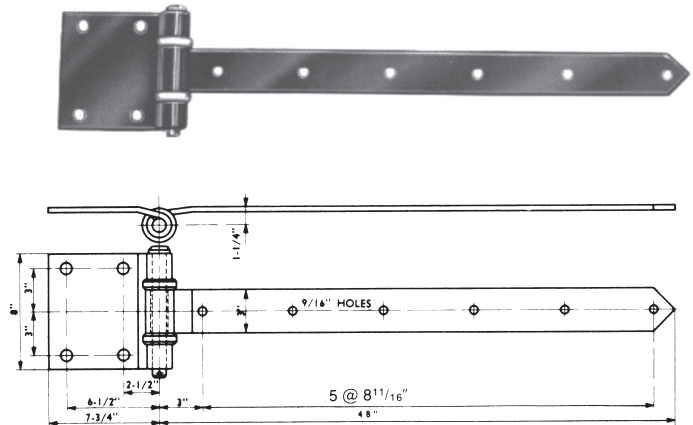
03 x 1 Hinge



1-0232

SIZE: 48"
PINTLE: Formed steel, 3/8" thick.
STRAP: Formed steel, 3/8" thick x 3" wide.
PIN: 1" dia. steel, zinc plated. Loose pin with cotter pin.
BEARINGS: 2 precision ball bearings.
FINISH: Pintle and strap, black enamel.
PACKED: Strapped in bundles as required. Fasteners not included.
SHIPPING WEIGHT: 24 lbs. each.

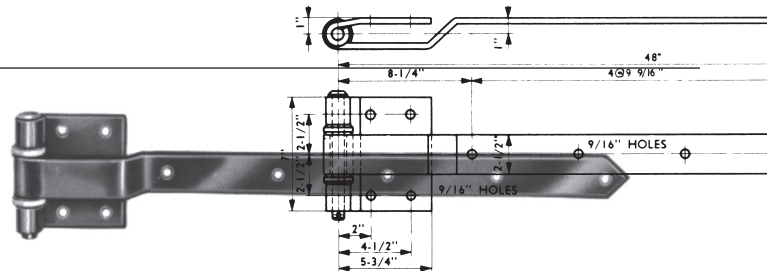
434 WM - BB Hinge



1-1683

SIZE: 48"
PINTLE: Formed steel, 3/8" thick.
STRAP: Formed steel, 3/8" thick x 2-1/2" wide.
PIN: 3/4" dia. steel, zinc plated. Loose pin with cotter pin.
BEARINGS: 2 precision ball bearings.
FINISH: Pintle and strap, black enamel.
PACKED: Strapped in bundles as required. Fasteners not included.
SHIPPING WEIGHT: 17-1/2 lbs. each.

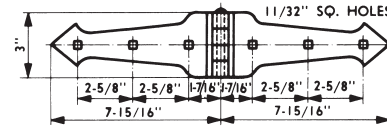
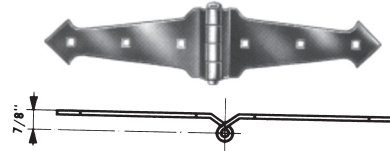
434 BL - BB Hinge



HARDWARE

2-2994

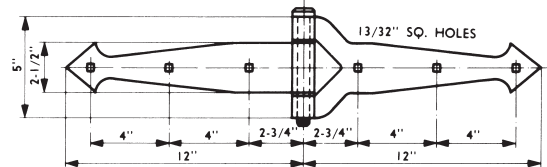
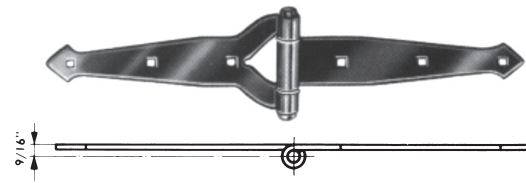
SIZE: 8"
STRAPS: Formed steel, 3/16" thick x 3" wide offset straps.
PIN: 3/8" dia. steel tight pin.
FINISH: Complete hinge, black enamel.
PACKED: Strapped in bundles as required. Fasteners not included.
SHIPPING WEIGHT: 2-1/2 lbs. each.



03 x 9 Hinge

1-0729

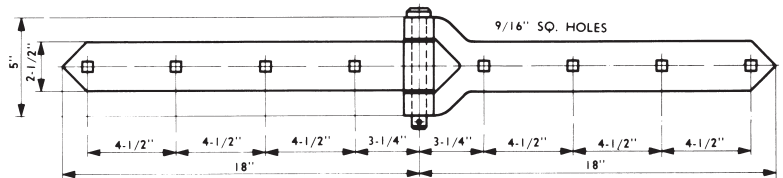
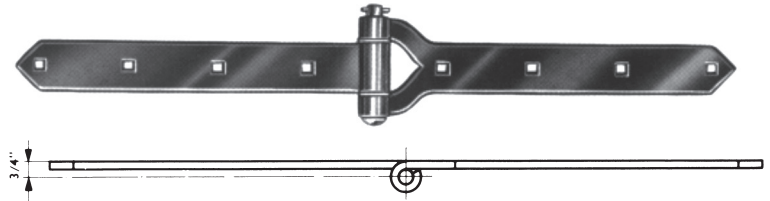
SIZE: 12"
STRAPS: Formed steel, 1/4" thick x 2-1/2" wide (basic width)
PIN: 5/8" dia. steel, zinc plated. Loose pin with cotter pin.
BEARINGS: 2 hardened steel disc bearings.
FINISH: Complete hinge, black enamel.
PACKED: Strapped in bundles as required. Fasteners not included.
SHIPPING WEIGHT: 6-1/2 lbs. each.



700 Hinge

1-0199

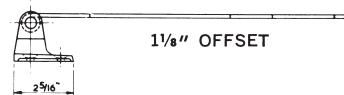
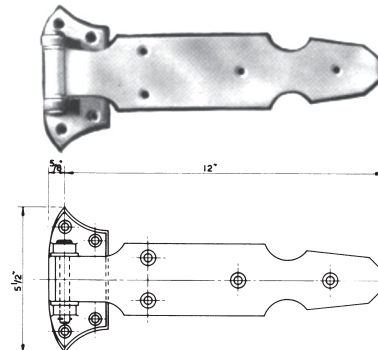
SIZE: 18"
STRAPS: Formed steel, 3/8" thick x 2-1/2" wide (basic width)
PIN: 3/4" dia. steel, zinc plated. Loose pin with cotter pin.
BEARINGS: 2 hardened steel disc bearings.
FINISH: Complete hinge, black enamel.
PACKED: Strapped in bundles as required. Fasteners not included.
SHIPPING WEIGHT: 12 lbs. each.



03 x 7 Hinge

1-0079

SIZE: 12"
PINTLE: Malleable iron casting.
STRAPS: Formed steel, 3/16" thick x 2-1/4" wide.
PIN: 3/8" dia. steel - loose.
BEARINGS: 2 hardened steel disc bearings.
FINISH: Pintle, strap and pin zinc plated.
PACKED: Strapped in bundles as required. Fasteners not included.
SHIPPING WEIGHT: 3 lbs. each.

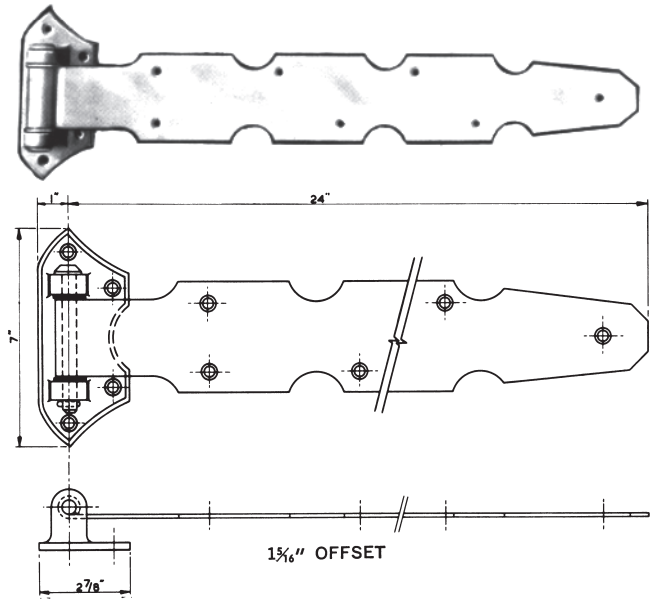


03R x 12 Refrig. Hinge

1-0081

SIZE: 24"
PINTLE: Malleable iron casting.
STRAPS: Formed steel, 3/16" thick x 3-1/2" wide.
PIN: 1/2" dia. steel - loose.
BEARINGS: 2 hardened steel discs.
FINISH: Pintle, strap and pin zinc plated.
PACKED: Strapped in bundles as required. Fasteners not included.
SHIPPING WEIGHT: 6 lbs. each.

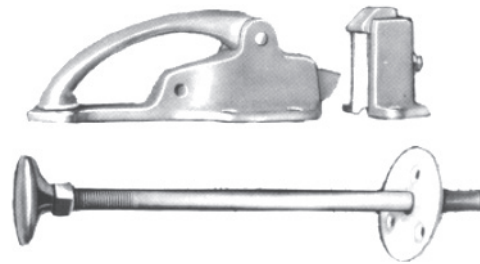
03R x 24 Refrig. Hinge



1-1657

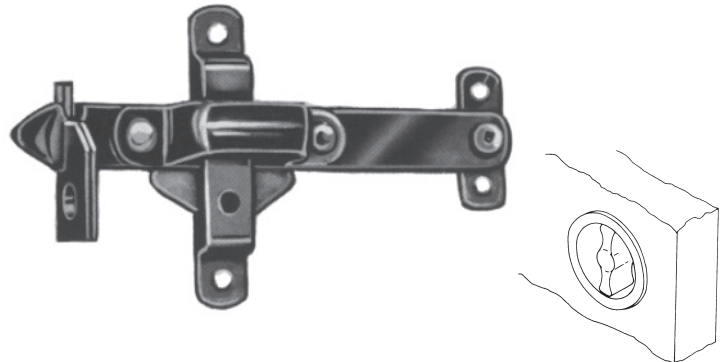
SIZE: 123
LENGTH: 9 inches.
FINISH: Zinc plated.
SHIPPING WEIGHT: 6 lbs. each.
PACKED: 1 set in a box.

123 Refrig. Latch



1-1514

SIZE: 152
DESCRIPTION: Combination lock and latch. Operated from either side of door. Other side of latch equipped with flush cup to allow installation on sliding doors as well.
DOOR THICKNESS: up to 2-3/4"
BAR: 1-1/2" x 5/16" x 14".
FINISH: Black enamel.
FASTENERS: Included.
SHIPPING WEIGHT: 6 lbs. each.
PACKED: 1 set in a box.

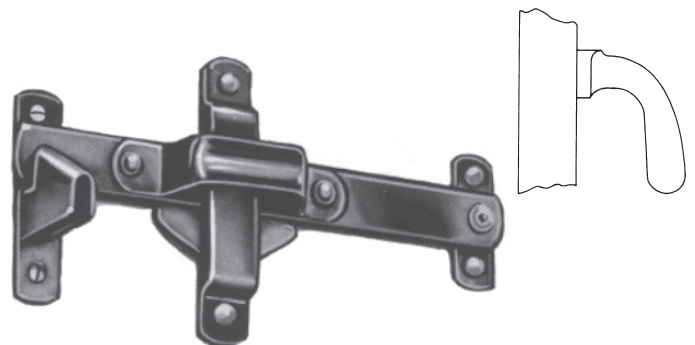


152 Latch

7-3012

SIZE: 125
DESCRIPTION: Heavy latch for swing doors. Reversible right and left. Pistol grip on other side of latch.
DOOR THICKNESS: up to 3"
BAR: 1-1/2" x 5/16" x 14".
FINISH: Black enamel.
FASTENERS: Included.
SHIPPING WEIGHT: 6-1/4 lbs. each.
PACKED: 1 set in a box.

125 Latch

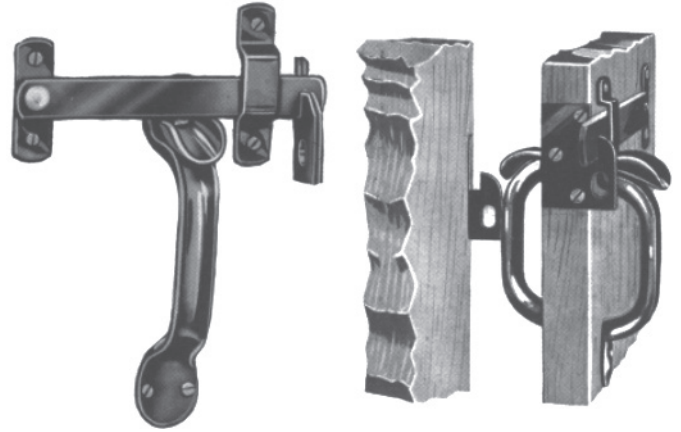


HARDWARE

7-1786

SIZE: 227L
DOOR THICKNESS: 1-3/4" to 2-3/4"
HANDLES: Grey iron casting, 7-3/4" long.
THUMB PIECES: Grey iron casting.
BAR: Steel 1" x 1/4" x 9-1/4" long.
LOCKING PLATES: Steel, to be mortised into door and jamb.
FINISH: Zinc plated.
FASTENERS: Included.
SHIPPING WEIGHT: 3 lbs. per box of one set.
PACKED: 1 set in a box, 10 boxes in a carton.
UPC CODE: 6-27991-11786

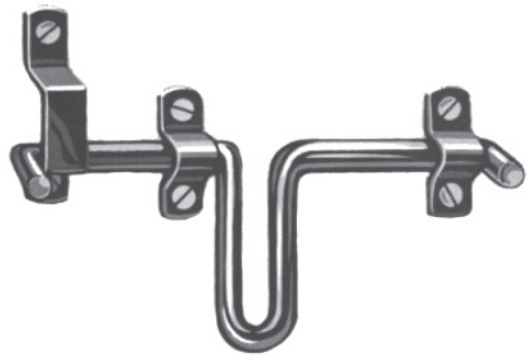
227L Latch



7-3140

SIZE: 128S
DESCRIPTION: All steel door bolt for swinging and sliding doors.
LATCH BOLT: 3/8" dia. formed steel.
OVERALL LENGTH: 8".
STAPLE: Supplied.
FINISH: Zinc plated.
SHIPPING WEIGHT: 10 lbs. per box of 10 bolts.
PACKED: 1 set in a box, 10 boxes in a carton.

128S Bolt

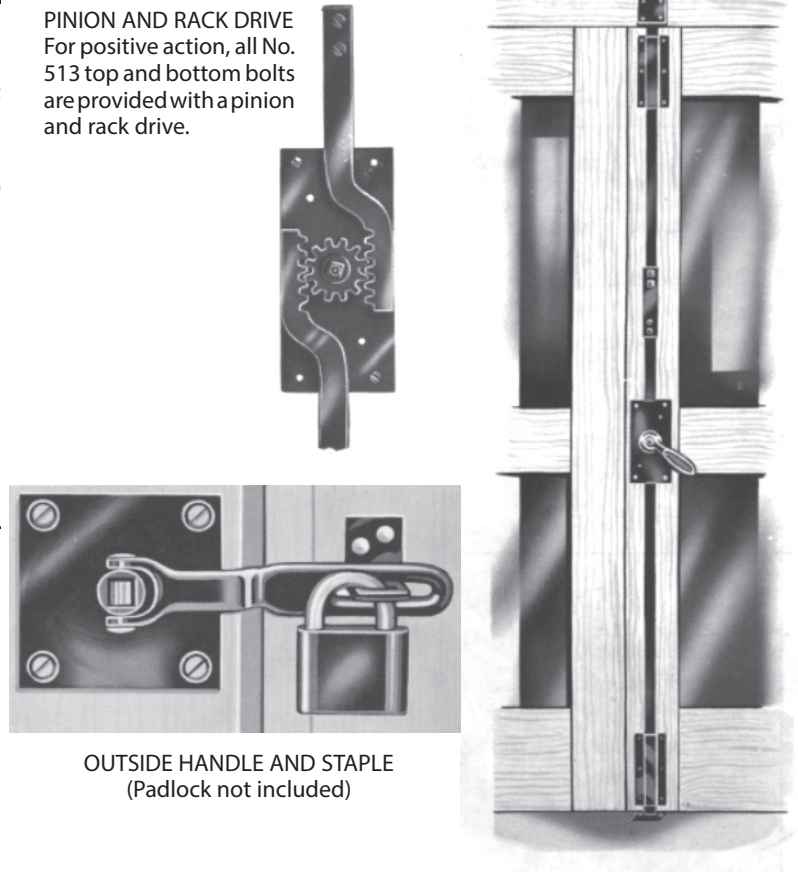


1-0162

SIZE: 513
DESCRIPTION: The 513 top and bottom bolt is for use on doors over 7'-0" high, up to 10'-0" high. Latch bars must be shortened to suit doors less than 10'-0" high.
DOOR THICKNESS: 1" to 1-3/4"
BARS: 5/16" thick x 1" wide steel bars.
GEAR CASE: All steel with bronze pinion. Case 4" wide x 8-1/2" high.
HOUSING: All steel construction, 3" wide x 7-1/2" high.
HANDLE: Heavy malleable cast iron construction.
SILL PLATE: All steel construction.
LINTLE PLATE: All steel construction.
TOP KEEPER: All steel construction.
DOOR PLATE: Steel 10 ga. 4" x 4".
STAPLE: All steel construction, (padlock not included).
FINISH: Black enamel.
SHIPPING WEIGHT: 23 lbs.
PACKED: 1 set in a box.

513 Top and Bottom Bolt

PINION AND RACK DRIVE
 For positive action, all No. 513 top and bottom bolts are provided with a pinion and rack drive.



OUTSIDE HANDLE AND STAPLE
 (Padlock not included)



1-1785

SIZE: 514 x 2
 HOUSING: Cast iron, 5-1/2" high x 2-7/8" wide.
 BOLT: Cast iron, bevelled.
 KEEPER: Surface.
 CHAIN: Zinc plated, 36" long - with ring.
 CHAIN CLIP: Formed steel.
 FINISH: Zinc plated.
 PACKED: 1 in a box. 10 boxes in a carton.
 SHIPPING WEIGHT: 2 1/2 lbs. each



514 x 2 Top Spring Bolt

7-6134

SIZE: 514 x 3
 HOUSING: Steel tube 1-1/4" sq. x 9" long.
 BOLT: Bevelled steel.
 KEEPER: Surface.
 CHAIN: Zinc plated, 7'0" long with ring.
 CHAIN CLIP: Formed steel.
 FINISH: Black enamel.
 PACKED: 1 in a box.
 SHIPPING WEIGHT: 5 lbs. each



514 x 3 Top Spring Bolt

7-6102 for 524 X 0 **7-6028** for 524 X 3
7-6093 for 524 X 2

SIZE: 524 x 0, 524 x 2, 524 x 3
 CANE: Formed steel bar.
 ALL FITTINGS: Formed heavy steel.
 FINISH: 524 x 0, 524 x 2, Zinc plated
 524 x 3, Black enamel
 SIZES: 524 x 0, 1/2" Dia. x 12" Lg.; 524 x 2, 3/4" Dia. x 24" Lg.
 524 x 3, 1" Dia. x 25" Lg.
 PACKED: 524 x 0, 524 x 2 5 sets per box
 524 x 3, 1 set per box
 SHIPPING WEIGHT: 524 x 0, 2 lbs. ea.; 524 x 2, 5 lbs. ea.;
 524 x 3, 11 lbs. ea.



524 Bottom Cane Bolt

111-0328

SIZE: 71
 HANDLE: Formed Steel.
 OVERALL SIZES: 7-1/2" high x 1-3/8" wide.
 LENGTH OF GRIP: 4-1/2".
 DEPTH OF GRIP: 2".
 FINISH: Zinc plated.
 SHIPPING WEIGHT: 1/2 lb. each
 UPC: 6-27991-10328-4



71 Bow Handle

HARDWARE



248-0140

SIZE: 81 X 1
HANDLE: Grey iron casting.
OVERALL SIZES: 6-1/4" high x 1-3/4" wide.
LENGTH OF GRIP: 3-3/4".
DEPTH OF GRIP: 1".
FINISH: Black enamel.
SHIPPING WEIGHT: 1/2 lb. each
UPC CODE: 6-27991-80140-1



81 x 1 Bow Handle

1-0418

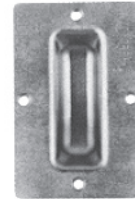
SIZE: 191
HANDLE: 3/4" dia. formed steel.
PADS: Straight. Steel drilled for 1/2" dia. bolts.
OVERALL SIZES: 13-1/2" high x 2" wide. Handle projects 2-3/4" from face of door.
LENGTH OF GRIP: 8".
DEPTH OF GRIP: 1-7/8".
FINISH: Black enamel.
SHIPPING WEIGHT: 3 lbs. each
UPC: 6-27991-10418-2



191 Bow Handle

425-0090

SIZE: 70
DESCRIPTION: Formed steel construction.
FACE PLATE: 7" high x 4-1/2" wide.
POCKET: 4-1/2" high x 1-3/8" wide x 1-1/4" deep.
FINISH: Commercially galvanized.
SHIPPING WEIGHT: 1 lb. each



70 Flush Pull

258-0169

SIZE: 470
HANDLE: Grey iron casting.
FACE PLATE: 6-3/8" high x 5" wide.
POCKET: 4-3/8" high x 3-3/4" wide x 1-3/4" deep.
FINISH: Black enamel.
SHIPPING WEIGHT: 3 lbs. each
UPC CODE: 6-27991-80169-2



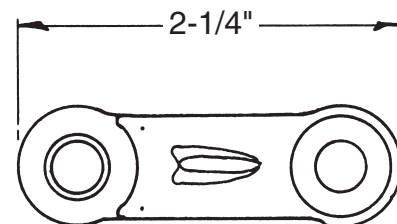
470 Flush Pull

328-311

These fusible links are adapted for use on all doors and windows which are constructed to operate automatically by heat. They melt at 160 degrees Fahrenheit.

No. 97 Fusible Link U.L. Approved.

97 Fusible Links

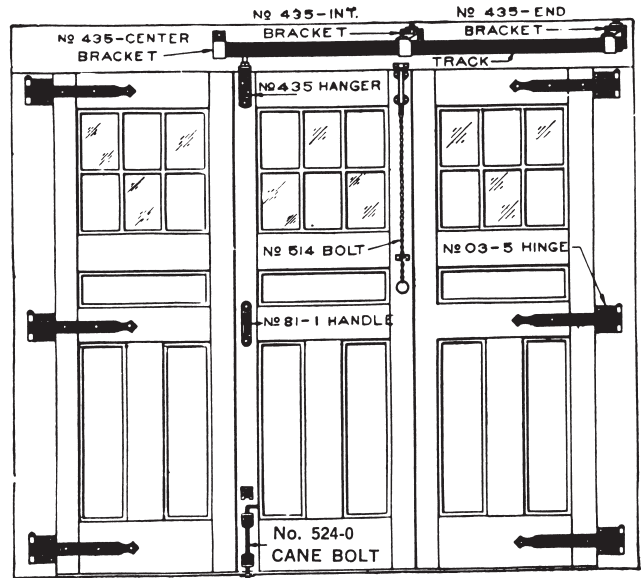


No. 97

X331A Set

- CONSISTS OF:
- 1 piece 31 Box Track
 - 1 No. 435 x 31 Centre Bracket
 - 1 No. 435 x 31 Intermediate Bracket
 - 1 No. 435 x 31 End Bracket
 - 1 No. 435 x 31 Hanger
 - 4-1/2 Pr. 4 x 4 Butt Hinges
 - 1 No. 514 Top Spring Bolt
 - 1 No. 524-0 Cane Bolt
 - 1 No 81-1 Bow Handle
- FINISH: Black enamel.
SHIPPING WEIGHT: 48 lbs.

3 Door Sets For Openings Up to 9' Wide



331A5 Set

- CONSISTS OF:
- 1 piece 31 Box Track
 - 1 No. 435 x 31 Centre Bracket
 - 1 No. 435 x 31 Intermediate Bracket
 - 1 No. 435 x 31 End Bracket
 - 1 No. 435 x 31 Hanger
 - 1-1/2 Pr. 4 x 4 Butt Hinges
 - 3 Pr. 03 x 5 Offset Hinges
 - 1 No. 514 Top Spring Bolt
 - 1 No. 524-0 Cane Bolt
 - 1 No 81-1 Bow Handle
- FINISH: Black enamel.
SHIPPING WEIGHT: 64 lbs.

331B Set

- CONSISTS OF:
- 1 piece 31 Box Track
 - 1 No. 435 x 31 Centre Bracket
 - 1 No. 435 x 31 Intermediate Bracket
 - 1 No. 435 x 31 End Bracket
 - 1 No. 435 x 31 Hanger
 - 4-1/2 Pr. 4 x 4 Butt Hinges
 - 1 No. 513 Top and Bottom Bolt
 - 1 No 81-1 Bow Handle
- FINISH: Black enamel.
SHIPPING WEIGHT: 56 lbs.

331B5 Set

- CONSISTS OF:
- 1 piece 31 Box Track
 - 1 No. 435 x 31 Centre Bracket
 - 1 No. 435 x 31 Intermediate Bracket
 - 1 No. 435 x 31 End Bracket
 - 1 No. 435 x 31 Hanger
 - 1-1/2 Pr. 4 x 4 Butt Hinges
 - 3 Pr. 03 x 5 Offset Hinges
 - 1 No. 513 Top and Bottom Bolt
 - 1 No 81-1 Bow Handle
- FINISH: Black enamel.
SHIPPING WEIGHT: 78 lbs.
Specify if "Open Out" Set Required

USE ABOVE NO. 31 MATERIAL SETS FOR DOORS TOTALLING 250 LBS.

333A Set

- CONSISTS OF:
- 1 piece 33 Box Track
 - 1 No. 435 x 33 Centre Bracket
 - 1 No. 435 x 33 Intermediate Bracket
 - 1 No. 435 x 33 End Bracket
 - 1 No. 435 x 33 Hanger
 - 1-1/2 Pr. 700 Centre Hinges
 - 3 Pr. 03 x 5 Offset Hinges
 - 1 No. 514 Top Spring Bolt
 - 1 No. 524-0 Bottom Cane Bolt
 - 1 No 81-1 Bow Handle
- FINISH: Black enamel.
SHIPPING WEIGHT: 200 lbs.

333B Set

- CONSISTS OF:
- 1 piece 33 Box Track
 - 1 No. 435 x 33 Centre Bracket
 - 1 No. 435 x 33 Intermediate Bracket
 - 1 No. 435 x 33 End Bracket
 - 1 No. 435 x 33 Hanger
 - 1-1/2 Pr. 700 Centre Hinges
 - 3 Pr. 03 x 5 Offset Hinges
 - 1 No. 513 Top and Bottom Bolts
- FINISH: Black enamel.
SHIPPING WEIGHT: 220 lbs.

USE ABOVE NO. 33 MATERIAL SETS FOR DOORS TOTALLING 400 LBS.

SLIDETITE HARDWARE

X331A Set

- CONSISTS OF:
- 1 piece 31 Box Track
 - 1 No. 435 x 31 Centre Bracket
 - 1 No. 435 x 31 Intermediate Bracket
 - 1 No. 435 x 31 End Bracket
 - 1 No. 435 x 31 Hanger
 - 6 Pr. 4 x 4 Butt Hinges
 - 2 No. 514 Top Spring Bolts
 - 2 No. 524-0 Cane Bolts
 - 2 No 81-1 Bow Handles
- FINISH: Black enamel.
 SHIPPING WEIGHT: 55 lbs.
 Specify if "Open Out" Set Required

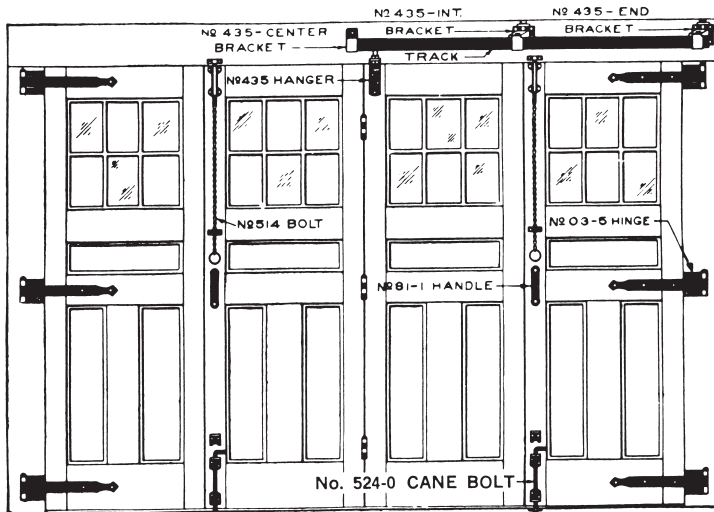
X331A5 Set

- CONSISTS OF:
- 1 piece 31 Box Track
 - 1 No. 435 x 31 Centre Bracket
 - 1 No. 435 x 31 Intermediate Bracket
 - 1 No. 435 x 31 End Bracket
 - 1 No. 435 x 31 Hanger
 - 3 Pr. 4 x 4 Butt Hinges
 - 3 Pr. 03 x 5 Offset Hinges
 - 2 No. 514 Top Spring Bolts
 - 2 No. 524-0 Cane Bolts
 - 2 No 81-1 Bow Handles
- FINISH: Black enamel.
 SHIPPING WEIGHT: 70 lbs.
 Specify if "Open Out" Set Required

X331B Set

- CONSISTS OF:
- 1 piece 31 Box Track
 - 1 No. 435 x 31 Centre Bracket
 - 1 No. 435 x 31 Intermediate Bracket
 - 1 No. 435 x 31 End Bracket
 - 1 No. 435 x 31 Hanger
 - 6 Pr. 4 x 4 Butt Hinges
 - 2 No. 513 Top and Bottom Bolts
 - 2 No 81-1 Bow Handles
- FINISH: Black enamel.
 SHIPPING WEIGHT: 65 lbs.
 Specify if "Open Out" Set Required

4 Door Sets For Openings Up to 12' Wide (3 Doors Folding, 1 Door Swinging)



X331A5 Set Shown

X331B5 Set

- CONSISTS OF:
- 1 piece 31 Box Track
 - 1 No. 435 x 31 Centre Bracket
 - 1 No. 435 x 31 Intermediate Bracket
 - 1 No. 435 x 31 End Bracket
 - 1 No. 435 x 31 Hanger
 - 3 Pr. 4 x 4 Butt Hinges
 - 3 Pr. 03 x 5 Offset Hinges
 - 2 No. 513 Top and Bottom Bolts
 - 2 No 81-1 Bow Handles
- FINISH: Black enamel.
 SHIPPING WEIGHT: 85 lbs.
 Specify if "Open Out" Set Required

USE ABOVE NO. 31 MATERIAL SETS FOR DOORS TOTALLING 360 LBS.

X333A Set

- CONSISTS OF:
- 1 piece 33 Box Track
 - 1 No. 435 x 33 Centre Bracket
 - 1 No. 435 x 33 Intermediate Bracket
 - 1 No. 435 x 33 End Bracket
 - 1 No. 435 x 33 Hanger
 - 3 Pr. 700 Centre Hinges
 - 3 Pr. 03 x 5 Offset Hinges
 - 2 No. 514 Top Spring Bolts
 - 2 No. 524-0 Bottom Cane Bolts
 - 2 No 81-1 Bow Handles
- FINISH: Black enamel.
 SHIPPING WEIGHT: 235 lbs.
 Specify if "Open Out" Set Required

X333B Set

- CONSISTS OF:
- 1 piece 33 Box Track
 - 1 No. 435 x 33 Centre Bracket
 - 1 No. 435 x 33 Intermediate Bracket
 - 1 No. 435 x 33 End Bracket
 - 1 No. 435 x 33 Hanger
 - 3 Pr. 700 Centre Hinges
 - 3 Pr. 03 x 5 Offset Hinges
 - 2 No. 513 Top and Bottom Bolts
 - 2 No 81-1 Bow Handles
- FINISH: Black enamel.
 SHIPPING WEIGHT: 255 lbs.
 Specify if "Open Out" Set Required

USE ABOVE NO. 33 MATERIAL SETS FOR DOORS TOTALLING 500 LBS.

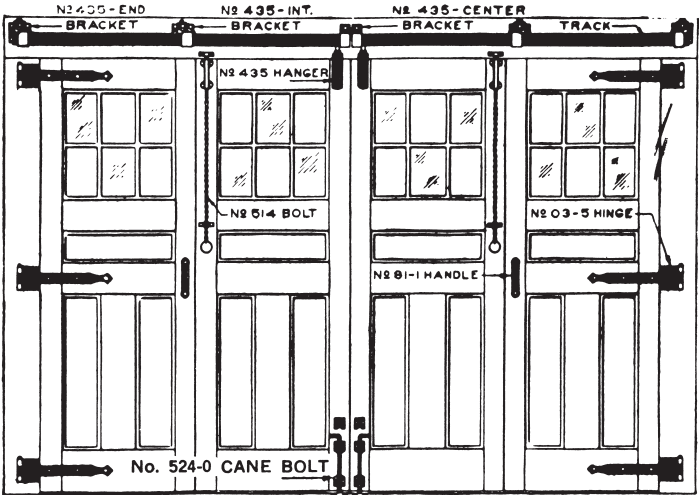


SLIDETITE HARDWARE

431A Set

- CONSISTS OF: 2 pieces 31 Box Track
 2 No. 435 x 31 Centre Brackets
 2 No. 435 x 31 Intermediate Brackets
 2 No. 435 x 31 End Brackets
 2 No. 435 x 31 Hangers
 6 Pr. 4 x 4 Butt Hinges
 2 No. 514 Top Spring Bolts
 2 No. 524-0 Cane Bolts
 2 No 81-1 Bow Handles
- FINISH: Black enamel.
 SHIPPING WEIGHT: 80 lbs.

4 Door Sets for Openings up to 12' Wide
(2 Doors Slide Right - 2 Doors Slide Left)



431A5 Set Shown

431A5 Set

- CONSISTS OF: 2 pieces 31 Box Track
 2 No. 435 x 31 Centre Brackets
 2 No. 435 x 31 Intermediate Brackets
 2 No. 435 x 31 End Brackets
 2 No. 435 x 31 Hangers
 3 Pr. 4 x 4 Butt Hinges
 3 Pr. 03 x 5 Offset Hinges
- FINISH: Black enamel.
 SHIPPING WEIGHT: 105 lbs.

431B Set

- CONSISTS OF: 2 pieces 31 Box Track
 2 No. 435 x 31 Centre Brackets
 2 No. 435 x 31 Intermediate Brackets
 2 No. 435 x 31 End Brackets
 2 No. 435 x 31 Hangers
 6 Pr. 4 x 4 Butt Hinges
 2 No. 513 Top and Bottom Bolts
 Replaces No. 524 Cane Bolts.
- FINISH: Black enamel.
 SHIPPING WEIGHT: 95 lbs.

431B5 Set

- CONSISTS OF: 2 pieces 31 Box Track
 2 No. 435 x 31 Centre Brackets
 2 No. 435 x 31 Intermediate Brackets
 2 No. 435 x 31 End Brackets
 2 No. 435 x 31 Hangers
 3 Pr. 4 x 4 Butt Hinges
 3 Pr. 03 x 5 Offset Hinges
 2 No. 513 Top and Bottom Bolts
 Replaces No. 524 Cane Bolts.
- FINISH: Black enamel.
 SHIPPING WEIGHT: 120 lbs.

USE ABOVE NO. 31 MATERIAL SETS FOR DOORS TOTALLING 250 LBS.

433A Set

- CONSISTS OF: 2 pieces 33 Box Track
 2 No. 435 x 33 Centre Brackets
 2 No. 435 x 33 Intermediate Brackets
 2 No. 435 x 33 End Brackets
 2 No. 435 x 33 Hangers
 3 Pr. 700 Centre Hinges
 3 Pr. 03 x 5 Offset Hinges
 2 No. 514 Top Spring Bolts
 2 No. 524-0 Cane Bolts
 2 No 81-1 Bow Handles
- FINISH: Black enamel.
 SHIPPING WEIGHT: 320 lbs.

433B Set

- CONSISTS OF: 2 pieces 33 Box Track
 2 No. 435 x 33 Centre Brackets
 2 No. 435 x 33 Intermediate Brackets
 2 No. 435 x 33 End Brackets
 2 No. 435 x 33 Hangers
 3 Pr. 700 Centre Hinges
 3 Pr. 03 x 5 Offset Hinges
 2 No. 514 Top Spring Bolts
 2 No. 513 Top and Bottom Bolts
 Replaces No. 524 Cane Bolts.
- FINISH: Black enamel.
 SHIPPING WEIGHT: 340 lbs.

USE ABOVE NO. 33 MATERIAL SETS FOR DOORS TOTALLING 600 LBS.

DOOR SNUGGER

7-6143 DOOR SNUGGER

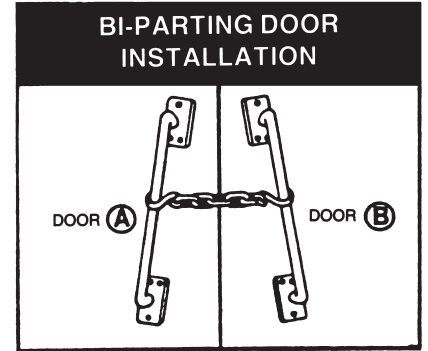


ZINC PLATED
WELDED CHAIN
LAG BOLTS INCLUDED
SIMPLE TO INSTALL

- Built Ruggedly to "Last"
- Quick and Easy Installation.
- Used as Door Pull to Open and Close.
- Fits Most Sliding Doors.
- Quick Latching.
- Not Accessible From Outside.
- Locks Tight and Stays Tight.
- 1-1/2" x 15" Size.
- UPC Code: 6-27991-76143-9

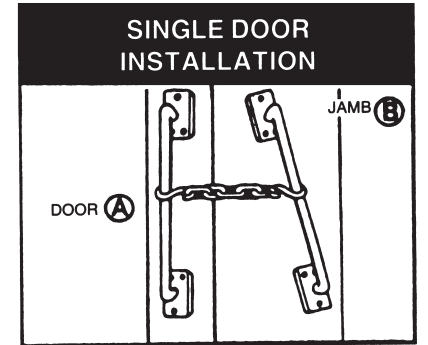
BI-PARTING DOOR INSTALLATION

1. Install brackets, one on each door (A) & (B). Make sure the distance between the bottom of brackets is 2" greater than at top.
Pull chain down to snug doors together.



SINGLE DOOR INSTALLATION

2. Install one bracket on inside of door (A). Install second bracket on door jamb (B) with chain and hooks in position. Make sure the distance between the bottom of brackets is 1-1/2" greater than at top.
Pull chain down to snug door to jamb.



For other applications, follow the simple principle of the above installations. Make sure the brackets are installed providing a 1"-2" wider gap between bottom brackets.

NOTES

HOW TO ORDER REPAIR PARTS

DEVANCO  **CANADA**

19192 HAY ROAD, UNIT Q
SUMMERSTOWN, ON, K0C 2E0

TOLL FREE 1-855-931-3334
WWW.DEVANCOCANADA.COM

**WHEN ORDERING REPAIR PARTS
PLEASE SUPPLY THE FOLLOWING INFORMATION:**

- ✓ PART NUMBER
- ✓ DESCRIPTION
- ✓ MODEL NUMBER

